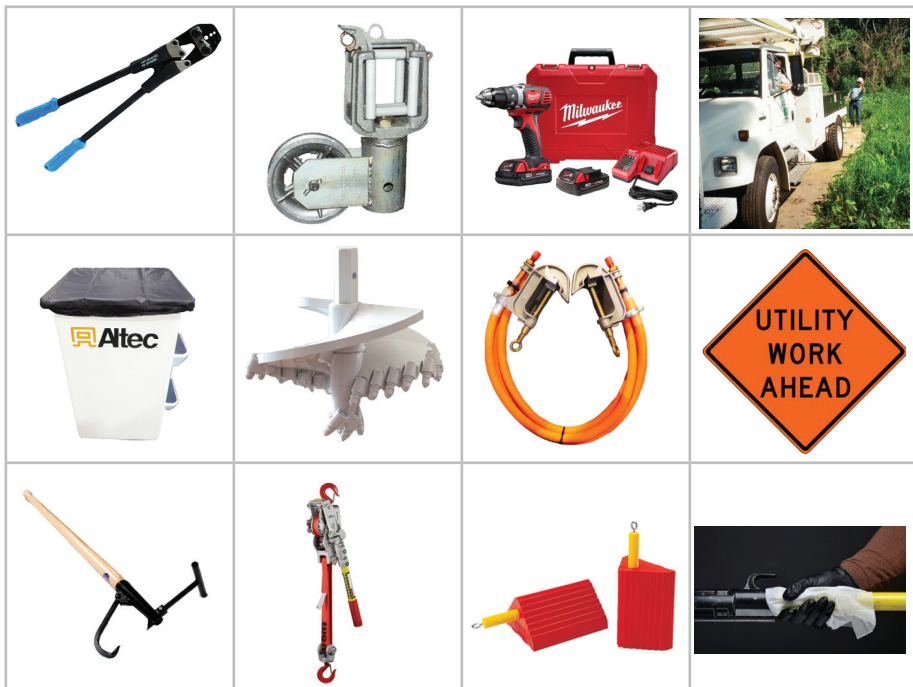


WE BRING THE STORE TO YOUR DOOR



WITH [CONNECT.ALTEC.COM/STORE](https://connect.altec.com/store)

Our Online Supply Store Offers the Ability to:

- Quickly & Easily Track Online Purchases
- View Past Invoices
- Order Tools & Accessories

To Register: <https://connect.altec.com/pages/registration>



REGISTER HERE

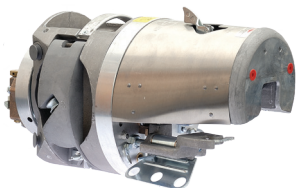
Full Line Supplier For The Utility,
Telecommunications, & Arborist Industries



TOOLS BUILT TO GO THE DISTANCE

General Altec Products, a family-owned business located in Suburban Philadelphia, Pennsylvania, is a manufacturer of a wide range of products for the telecommunications, power utility and cable television industries, and the contractors who serve them.

Cable Lashers & Accessories



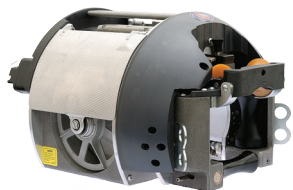
C2 CABLE LASHER

P/N 900070362
GMP 71422
Wt. 35 lbs.



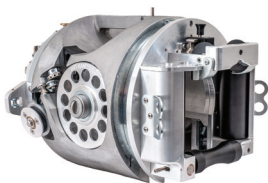
J2 CABLE LASHER

P/N 900086070
GMP 86070
Wt. 46 lbs.



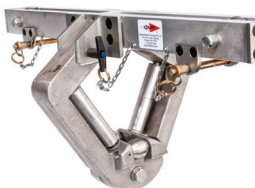
APOLLO CABLE LASHER

P/N 900070400
GMP 70400
Wt. 38 lbs.



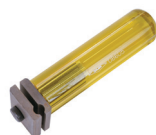
SUPER G CABLE LASHER

P/N 970796332
GMP 10505
Wt. 58 lbs.



HD CABLE ROLLER DOLLY FOR SUPER G

P/N 970796333
GMP 70697
Wt. 21 Lbs.



LASHING WIRE GRIP

P/N 900008605
GMP 08605
Wt. 10 oz.



D LASHING WIRE CLAMP

100/pk.
P/N 900007886
GMP 07886
Wt. 15 lbs.



E LASHING WIRE CLAMP

100/pk.
P/N 900081460
GMP 81460
Wt. 6 lbs.



3/8X35' TOWING ROPE

P/N 900070190
GMP 70190
Wt. 6 lbs.



CABLE BLOCK 24" PUSHER

P/N 900070431
GMP 70431
Wt. 1.8 lbs.



OVERLASHING AERIAL CABLE GUIDE

P/N 900008007
GMP 08007
Wt. 11 lbs.



AERIAL CABLE GUIDE

P/N 900070055
GMP 70055
Wt. 3.5 lbs.

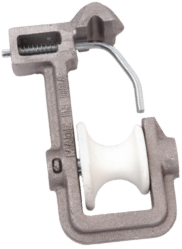


LASHING WIRE

Wt. 39 lbs. (box/6)
see website for sizes



Cable Lashers & Accessories



73305 CABLE BLOCK
P/N 970796341
GMP 73305
Wt. 4 oz.



75000 CABLE BLOCK
P/N 970666512
GMP 75000
Wt. 4 lbs.



CLIP-ON BLOCK 10/Pk
P/N 900070365
GMP 87265
Wt. 11 lbs./pk.



B CABLE BLOCK
P/N 900070336
GMP 70336
Wt. 1 lb.



MULTI SHEAVE BLOCK
P/N 900010553
GMP 10553
Wt. 15 lbs.



4 & 2.75" OVERLASH ROLLER
P/N 970666513
87210 4" (Left)
P/N 970796345
87213 2.75" (Right)
Wt. 1 lb.



F CABLE BLOCK
P/N 970796346
GMP 08093
Wt. 4 lbs.



D CABLE BLOCK
P/N 900072680
GMP 72680
Wt. 3.75 lbs.



1 ECONO CABLE BLOCK
P/N 900074050
GMP 74050
Weight: 1 lb.



CABLE BLOCKS
P/N 900070363
10700 Aluminum
P/N 900070364
10701 Rubber
Wt. 2 lbs.



GMP WIRE RAISING TOOL
P/N 900006355
GMP 06355
Wt. 1.3 lbs.



FIBERGLASS EXTENSION HANDLE LAY-UP STICKS
P/N 900024193 24193 3' long
P/N 900024194 24194 6' long
P/N 900070367 15310 Kit
(1) 24193 (3) 24194 Wt. 7 lbs.



General Machine Products, a family-owned business located in Suburban Philadelphia, Pennsylvania, is a manufacturer of a wide range of products for the telecommunications, power utility and cable television industries, and the contractors who serve them.

TOOLS BUILT TO GO THE DISTANCE

Cable & Strand Placing Accessories



90° CORNER BLOCKS

P/N 970666516
GMP 70438 Nylon Wt. 13 lbs.
P/N 970666517
GMP 70449 Aluminum Wt. 16 lbs.



RATCHETING POLE MOUNT BRACKET

P/N 970734744
GMP 70372 Wt. 12.5 lbs.



UNIVERSAL STRINGING BLOCK

970348641
7" Diameter Sheave



CROSSARM BRACKET
970348647



CLEVIS ASSEMBLY
970348649

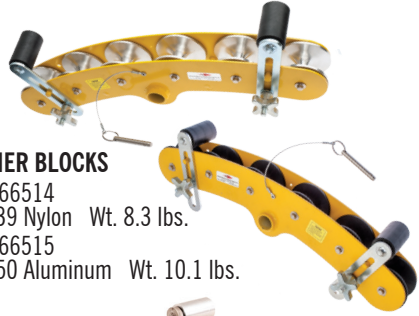


YOKE ASSEMBLY
970348648



45° CORNER BLOCKS

P/N 970666514
GMP 70439 Nylon Wt. 8.3 lbs.
P/N 970666515
GMP 70450 Aluminum Wt. 10.1 lbs.



HD 45° CORNER BLOCK

P/N 970796350
GMP 70435
Wt. 13.4 lbs.



VERTICAL ANGLE ADAPTER

P/N 970666691
GMP 70440 Wt. 4 lbs.



HD MOUNTING BRACKET

P/N 970796351
GMP 70550
Wt. 11.5 lbs.



3/4 TON STRAP HOIST

P/N 970576981
GMP 87267
Wt. 12.5 lbs.



Cable & Strand Placing Accessories



TOOLS BUILT TO GO THE DISTANCE



D UMBRELLA - WOOD POLE

P/N 900080920
GMP 80920
Wt. 9 lbs.

DIELECTRIC UMBRELLA - FIBERGLASS POLE

P/N 900070352
GMP 70352
Wt. 7.5 lbs.



ANGLE ADAPTER

P/N 900071647
GMP 71647
Wt. 2.5 lbs.



BUCKET HOLDER

P/N 900028210
GMP 28210
Wt. 2 lbs.



STRAND TENSIONMETER - DYNAMOMETER

P/N 900070046 GMP 70046
1/4" EHS + 5/16" to 7/16" UG

P/N 900070446 GMP 70446
1/4" to 7/16" EHS + 5/16" to 7/16" UG
Wt. 11 lbs.



KLEIN® TOOLS CHICAGO® GRIP 1659-5AT B STRAND PULLER

P/N 900016596
GMP 68490
Wt. 7 lbs.



KLEIN® TOOLS Grip for High Strength Cables

P/N 900016134
GMP 68495
Wt. 7 lbs.



KLEIN TOOLS® CHICAGO® GRIP 1628-16AT H STRAND PULLER

P/N 900068491
GMP 68491
Wt. 16 lbs.



KLEIN® TOOLS HAVEN'S® GRIP

P/N 970666524
GMP 68493
Wt. 4 lbs.



KLEIN® TOOLS CHICAGO® GRIP 1684-5AT L STRAND PULLER

P/N 900016597
GMP 68492
Wt. 7 lbs.



STRAND BRAKE

P/N 970796356
GMP 75432
Wt. 1.2 lbs.





STANLEY®



D3 + O



D3 + BG



Kearney + BG

6-Ton In-Line Cutting and Crimping Tool

P/N 970732916 (STANLEY IBC600K02)*

6 TON INLINE TOOL KIT - D3/O JAWS

P/N 970794712 (STANLEY IBC600KG2)*

6 TON INLINE TOOL KIT - D3/BG JAWS

P/N 970740321 (STANLEY IBC600K05)**

6 TON INLINE TOOL KIT - D3/O JAWS

P/N 970732918 (STANLEY IBC600KG5)**

6 TON INLINE TOOL KIT - D3/BG JAWS

P/N 970732919 (STANLEY IBC600KE5)**

6 TON INLINE TOOL KIT - KEARNEY/BG JAWS

P/N 970800684 (STANLEY 82604)

ACSR CUTTER

P/N 970800697 (STANLEY 94814)

EHS CUTTING JAWS

*2x 2 AH DEWALT BATTERIES, CHARGER, BUCKET BAG

**2x 5 AH DEWALT BATTERIES, CHARGER, BUCKET BAG

Pole Tamper

P/N 036030001 (STANLEY TA54103)

71"/180 CM, VALVE IN HANDLE, 1,600 BPM

P/N 036030013 (STANLEY TA54603)

69"/175 CM, WITHOUT VALVE, 1,600 BPM

P/N 970017137 (STANLEY TA54603A)

69"/175 CM, INLINE VALVE, 1,600 BPM



Impact Drill / Wrench

P/N 812604810 (STANLEY ID07810)

500 FT LBS

P/N 900007815 (STANLEY ID07815)

500 FT LBS WITH TRIGGER GUARD





DEWALT®

Stapler and Staples

P/N 970767860 (DEWALT DCFS950P2)

20V MAX* XR® 9 GA CORDLESS FENCING STAPLER KIT

P/N 970793926 (DEWALT DCFS950B)

20V MAX* XR® 9 GA CORDLESS FENCING STAPLER (TOOL ONLY)

P/N 970767861 (DEWALT DFS9150B1G)

1-1/2" 9 GA GALVANIZED BARBED FENCING STAPLES

P/N 970767862 (DEWALT DFS9175B1G)

1-3/4" 9 GA GALVANIZED BARBED FENCING STAPLES

P/N 970767864 (DEWALT DFS9200B1G)

2" 9 GA GALVANIZED BARBED FENCING STAPLES



7/16" Impact

P/N 970739861 (DEWALT DCF898P2)

20V MAX* XR® HIGH TORQUE 7/16" IMPACT WRENCH WITH QUICK RELEASE CHUCK KIT

P/N 970774719 (DEWALT DCF898B)

20V MAX* XR® HIGH TORQUE 7/16" IMPACT WRENCH WITH QUICK RELEASE CHUCK (TOOL ONLY)



Chainsaws

P/N 970793980 (DEWALT DCPS620M1)

20V MAX* XR® CORDLESS POLE SAW KIT

P/N 970793979 (DEWALT DCCS620P1)

20V MAX* XR® COMPACT 12" CORDLESS CHAINSAW KIT

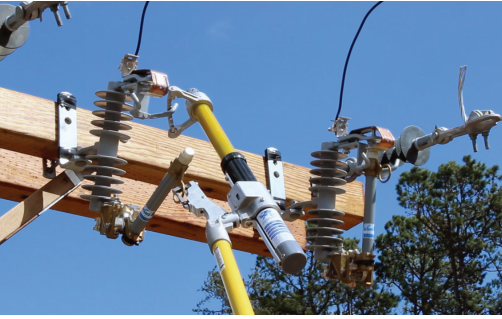
P/N 970740988 (DEWALT DCCS670X1)

FLEXVOLT® 60V MAX* BRUSHLESS CHAINSAW KIT



LOAD-RANGER® XLT Load Break Tool

Safely open Cutouts, Disconnect Switches, Power Fuses, or any “hook equipped” device within the tools rating.



- 20% Lighter than other load break tools
- Unique Side Reset Button (easier gloved operation)
- Higher Metal-to-Metal Clearance
- Built in Counter Included
- Low profile head fits under most wildlife guards
- Interruption rating of 600 amperes nominal, 900 amperes maximum

	970098051 USLR-XLT-1-H	970211836 USLR-XLT-2-H
Maximum Voltage	27 kV	27 kV - 38 kV
Maximum Amperage	900 AMP	900 AMP
Weight	4 lbs. 3 oz.	4 lbs. 12 oz.
Metal To Metal Clearance During Stroke (Flash-Over Resistance)	8.2" EST	12.2" EST
Reset Function	Side Location Push Button	



**970098051
USLR-XLT-1-H**



**970211836
USLR-XLT-2-H**

**970545553
USLR-XLT-1-P-H**



Hard Case

Pad Mount option uses a lower profile operating arm and an extended hood for greater clearance and safety inside pad gear.

- | | | |
|---------------|-----------------------|---|
| P/N 970098051 | USLR-XLT-1-H | 15kV - 27kV LOAD-RANGER with Hard Case |
| P/N 970545553 | USLR-XLT-1-P-H | 15kV - 27kV PAD MOUNT LOAD-RANGER with Hard Case |
| P/N 970211836 | USLR-XLT-2-H | 27kV - 38kV LOAD-RANGER with Hard Case |

BREAK-SAFE® Load Break & Pick-up Tool



Safely create a parallel circuit. Great for new construction or maintenance. Incorporates a parking stand for use with standard jumpers.

- Load Break, Pick-up, and Continuous Current Duty
- Safely Open and Close Circuits Using a Hot Stick
- 300 Amp Portable Switch



P/N 970113079
USBS-15-1-PS-S



P/N 970107161
USBS-15-2-PS-S

	BREAK-SAFE® USBS-15	BREAK-SAFE® USBS-27	BREAK-SAFE® USBS-38	BREAK-SAFE® USBS-46
Operational Voltage	15 kV	27 kV	38 kV	46 kV
Load Break, Load Pickup, And Continuous Current Rating	300 AMP	300 AMP	300 AMP	200 AMP
Conductor Size	#6 COPPER MIN. up to 954 ACSR (1.1" dia.) MAX.			
Weight	7 lbs. 1 oz.	7 lbs. 14 oz.	8 lbs. 6 oz.	10 lbs. 1 oz.
Dimensions (Approximate Diameter)	27" long x 2.5" diameter	31" long x 2.5" diameter	33" long x 2.5" diameter.	39" long x 2.5" diameter

- P/N 970113079 USBS-15-1-PS-S 15kV Rated, Gloved Operation; 300 Amps; Floating Head, Soft Case
P/N 970107161 USBS-15-2-PS-S 15kV Rated, Stick Operation; 300 Amps; Duckbill Head, Soft Case
P/N 970118311 USBS-27-1-PS-S 27kV Rated, Gloved Operation; 300 Amps; Floating Head, Soft Case
P/N 970211843 USBS-27-2-PS-S 27kV Rated, Stick Operation; 300 Amps; Duckbill Head, Soft Case
P/N 970797887 USBS-38-1-PS-S 38kV Rated, Gloved Operation; 300 Amps; Floating Head, Soft Case
P/N 970797900 USBS-38-2-PS-S 38kV Rated, Stick Operation; 300 Amps; Duckbill Head, Soft Case
P/N 970211844 USBS-46-1-PS-S 46kV Rated, Gloved Operation; 200 Amps; Floating Head, Soft Case
P/N 970211848 USBS-46-2-PS-S 46kV Rated, Stick Operation; 200 Amps; Duckbill Head, Soft Case

These products are patent protected under Patent number 6,875,917 and other patents pending.

BLUE STRIPE® Telescopic Hot Sticks

- Advanced composite fiberglass made from epoxy resin
- Non-woven fiberglass resists dirt and grime build-up
- Patented tip lock button replacement feature
- Patented alignment feature

Part Number	Utility Solutions	Size	Operating Lengths	Closed Length	Weight
970212034	USTS-050	50 FT.	50',45',40',35',30'	68"	20 lbs.
970204285	USTS-045	45 FT.	45',40',35',30',26'	66"	16 lbs. 8 oz.
970203505	USTS-040	40 FT.	40',35',30',26',21'	65"	13 lbs. 8 oz.
970212026	USTS-035	35 FT.	35',30',26',21',17'	63"	11 lbs.

Part Number	Utility Solutions	Size	Operating Lengths	Closed Length	Weight
970545554	USTS-050-EM	50 FT.	50',45',40',35',30'	68"	20 lbs.
970545555	USTS-045-EM	45 FT.	45',40',35',30',26'	66"	16 lbs. 8 oz.
970545556	USTS-040-EM	40 FT.	40',35',30',26',21'	65"	13 lbs. 8 oz.
970545557	USTS-035-EM	35 FT.	35',30',26',21',17'	63"	11 lbs.

Take-Apart Measuring Sticks Available

Part Number	Utility Solutions	Size	Operating Lengths	Closed Length	Weight
970708677	USTS-TA-045-N	45 FT.	45',40',35',30',26'	66"	16 lbs. 8 oz.
970709094	USTS-TA-040-N	40 FT.	40',35',30',26',21'	65"	13 lbs. 8 oz.
970706932	USTS-TA-035-N	35 FT.	35',30',26',21',17'	63"	11 lbs.

Part Number	Utility Solutions	Size	Description	Weight
970335300	USSG-004-EREC	4' 6"		4 lbs. 4 oz.
970335302	USSG-006-EREC	6' 6"		5 lbs. 6 oz.
970335303	USSG-008-EREC	8' 8"	External Rod with End Cap	6 lbs. 3 oz.
970335304	USSG-010-EREC	10' 6"		7 lbs. 5 oz.

10

More sizes and options available. Contact your Altec Supply Manager for more information.

Jack Jumper™ Cutout Bypass Tool

The Jack Jumper™ Cutout Bypass Tool permits a safe and quick method to temporarily bypass an overhead cutout without the tedious use of bulky jumper cables. The tool is indispensable for fuse coordination tasks and permits easy bypass of an underground dip.

P/N 970208572 USJJ-001-S 15 kV Cutout Bypass Tool, Softcase
 P/N 970129495 USJJ-002-S 27 kV Cutout Bypass Tool, Softcase



Klondike Clamp™



The Klondike Clamp™ safely and quickly secures rubber blankets without causing damage and eliminates the need for tie wrap, bungee cords, Velcro® or tape.

P/N 970107168 USCP-001 6"-11" Diameter Klondike Clamp™
 P/N 970208590 USCP-002 11"-20" Diameter Klondike Clamp™

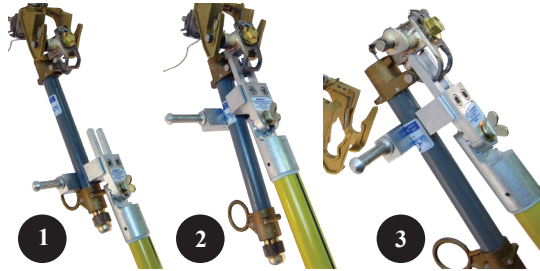
Grab-It™ Cutout Fuse Tube Remover



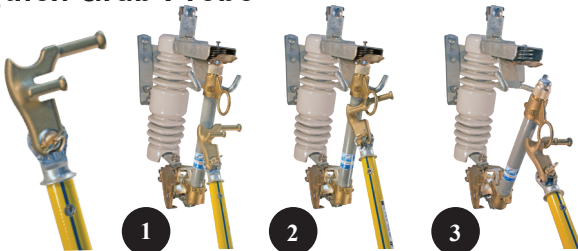
The patented Grab-It™ offers a safe and simple method to remove and install overhead fuse barrels. Easily attaches to any size hot stick.

Simply sweep behind the fuse barrel, push up to engage the patented forks, then lift and remove.

P/N 970127524 GRAB-IT-1 100 AMP Cutout Fuse Tuber Remover
 P/N 970284500 GRAB-IT-2 100 & 200 AMP Cutout Fuse Tuber Remover



Quick Grab Probe



The Quick Grab Probe quickly opens most any fuse door. Simply lay the arched shaped head against the barrel then slide up and rotate the top probe inside the ring and PULL!

P/N 970781450 USSA-QGP

970665724



Flexible Joint Head

US Patent
No. D781,118

5/8

1/2

4-IN-1

9/16

3/4



970326751



Forged Fixed Head

4-IN-1 HEAVY-DUTY BugWRENCH™ — A unique combination of 4 sizes in one wrench. Heavy-Duty forged design is available with or without an articulating “Flex-Head.”

970665724

BW-288 BugWRENCH, 4-in-1 Flex-Head, Reversing Ratchet, 5/8" & 1/2" - 9/16" & 3/4"

970665729

BW-088 BugWRENCH, Non-Insulated Flex-Head, 5/8" & 1/2" - 9/16" & 3/4"

970326751

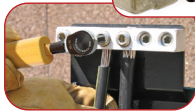
BW-244 BugWRENCH, 4-in-1 Fixed-Head, Reversing Ratchet, 5/8" & 1/2" - 9/16" & 3/4"

970326748

BW-044 BugWRENCH, Non-Insulated Fixed-Head, 5/8" & 1/2" - 9/16" & 3/4"



900002510



PENTA WRENCH — Insulated design features Ratchet penta socket, 3/8" hex socket for "Twist-Off" locks and 5/16" Hex (Allen) with 2" working length.

900002510

BW-251 BugWRENCH, Reversing Ratchet, 90° Penta - 5/16" Allen

US Patent No.
D543,810



970184718

METERPULLER® — For easier and safer remove & installation of residential and industrial electric meters.

970184714

M-001, Residential Single-Phase Meters

970184715

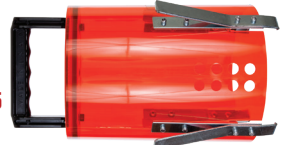
M-002A, Residential Single-Phase & Industrial Poly-Phase Meters

970184718

M-009, Canvas Storage Bag for one M-001 or M-002A



970184714



970184715

970184720

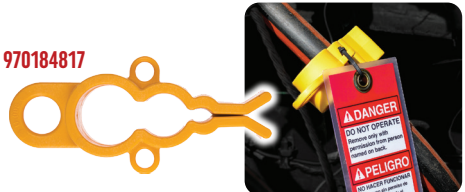


RUP HOLDTAG™ R-TD2 — For overhead devices. Has 2 clips for attaching hold card. Install with a disconnect stick.

970184720

R-TD2 RUP Holdtag

970184817



URD TAGGING U-008 — For Underground Residential Distribution (URD) power cables. Install with a shotgun stick.

970184817

U-008 URD Tagging



Roadside Safety

ALTEC SUPPLY HELPS KEEP YOUR TEAM SAFE



Full Sized Collapsible Safety Barrels

Keep your team safe on the roadside with highly visible DOT full sized fully collapsible safety barrels. Withstands heavy winds, add the SafetyUp Sandbag for additional wind resistance. Easy portability!



970792610 EC-PSB19

SAFETYUP

13



877.GO ALTEC | CONNECT.ALTEC.COM/STORE

Altec
Supply

BASHLIN INDUSTRIES



970658678 76PAT

PATRIOT™

The Patented Patriot™ is the lightest and most ergonomic WPFRD Wood Pole Fall Restraint Device of its kind. The rope and roller design greatly reduce pole drag when climbing and descending poles. While the handles encourage proper hand placement and more natural feel.

970658678	76PAT (Distribution Model)	Wt 3.5lbs
970798513	76PAT-T (Transmission Model)	Wt 3.6 lbs.

11BPD SERIES GEAR BAGS



970691185
11BPD-B

These rugged gear bags make stowing and transporting your gear simple. Made from durable coated polyester or canvas materials the 11BPD series duffel has a bright orange liner to help you find what you're looking for quick. These bags have quick adjusting padded shoulder straps and a roomy front pocket.

Our new 11BPDZ offers all the features of BPD plus has a convenient zipper allowing easy access to your gear from the side.

970691185	11BPD-B	Black	Wt. 6.0 lbs.
970704358	11BPD-Y	Yellow	Wt. 6.0 lbs.
970695380	11BPD-O	Orange	Wt. 6.0 lbs.
970732282	11BPD-C	Camo	Wt. 6.0 lbs.



970492395
11BPDZC

* Contents not included*

With Zipper Access:

970492392	11BPDZ-B	Black	Wt. 6.0 lbs.
970720304	11BPDZ-Y	Yellow	Wt. 6.0 lbs.
970492394	11BPDZ-O	Orange	Wt. 6.0 lbs.
970492395	11BPDZ-C	Camo	Wt. 6.0 lbs.

R.I.N.G. ROPE POSITIONING LANYARD

This positioning lanyard with "RAD" adjuster allows the worker to easily make one handed adjustments while under load. The cut and abrasion resistance of the Technora over-braid eliminates the need for PVC or nylon covers to protect the rope.

970492396 4018TX-8AL Wt. 2.1 Lbs.



970492396 4018TX-8AL

REST-SR SUSPENSION TRAUMA RELIEF LADDER

This simple device easily attaches to most 4'-6' shock-absorbing lanyards and will begin to self-deploy should a worker experience a fall event. When fully extended, the ladder will give the worker the ability to help relieve pressure on the legs and reduce the adverse effects of suspension trauma.

970696200 REST-SR Wt. 1.2 Lbs.



970696200
REST-SR
* Proper training using this product is required

25A-DS SERIES DRAWSTRING BOLT AND NUT BAGS

These bolt and nut bags have a drawstring closure to keep what you put in safely tucked away until you need it. Offered in 2 sizes - the standard and a tall version. Available in canvas, black ballistic nylon, orange, or camo.



970492400
25AT-DS



970492399
25AO-DS

Standard Height (8 1/2" x 4" x 9"):

970798544 25A-DS (Canvas)

970492397 25AB-DS (Black)

970492398 25AC-DS (Camo)

970492399 25AO-DS (Orange)

Tall (8 1/2" x 4" x 12"):

970492400 25AT-DS (Canvas)

970492401 25ATB-DS (Black)

970492402 25ATC-DS (Camo)

970492403 25ATO-DS (Orange)

BASHLIN "GRIP" SLINGS

Bashlin "GRIP" slings are ideal for handling and setting poles made from various material, especially those with a smooth or painted surface. The rubber material provides extra grip thus reduces slippage and protects finishes of materials.



951-300 G Series

3" Web & 2 Soft Eyes
Safe Working Load
Vertical: 7800 Lbs.
Choker: 6240 Lbs.
Basket: 15600 Lbs.

970492404

951-300-4G 4'

970492405

951-300-6G 6'

951-200 G Series

2" Web & 2 Soft Eyes
Safe Working Load:
Vertical: 6400 Lbs.
Choker: 5120 Lbs.
Basket: 12800 Lbs.

970492406

951-200-4G 4'

970718550

951-200-6G 6'

2012 G Series

13/4" Web
& 2 Soft Eyes
Safe Working Load:
Vertical: 3300 Lbs.
Choker: 2640 Lbs.
Basket: 6000 Lbs.

970492407

2012-52G 52"

970755879

2012-72G 72"

2011SE G Series

13/4" Web 1 Eye
& Steel Ring
Safe Working Load
Vertical: 2500 Lbs.
Choker: 2500 Lbs.
Basket: 5000 Lbs.

970718544

2011SE-52G 52"

970717982

2011SE-72G 72"

KV Line Safety's The Finger - 700TF

Easy way to safely and efficiently apply lubricant to your hoses. Put a can in the unit, pull the hose over the "Finger" and lubricant is sprayed evenly onto the inner skirt of the hose. Easily mounted to your truck or in a vise.

970787060 700TF The "Finger" Wt. 1.6 lbs.



Patented Triple Vent Design Reduces Heat Stress World's Safest FR Clothing Powered by Summit Breeze®

- Reduction in Heat Exhaustion
- FR Mesh maximizes airflow ensuring workers stay cool and better protected
- Data from the American Burn Institute proves inhalation injury increases the mortality rate by 16 times.
- Only MCR Safety FR clothing, powered by Summit Breeze® technology, directs a majority of gas away from the face, significantly minimizing inhalation injury.



FR MESH BACK VENT



UNDERARM VENTS

Dual Rated
NFPA 70E CAT 2 & NFPA 2112



SBS100X Series - 5.5 oz. FR Inherent Blend with Rip-Stop (APTV 8.9 cal/c,m²)*

Regular	MCR	Color	Small	Medium	Large	X-Large	2X-Large	3X-Large	4X-Large
	SBS1001	Gray	970777402	970777403	970492358	970492366	970492361	970777405	970492364
SBS1002	Navy	970492369	970492368	970777404	970492378	970492370	970492372	970492374	
SBS1003	Tan	970492383	970492381	970492380	970492388	970492384	970786818	970492386	

Tall	MCR	Color	Small (Tall)	Medium (Tall)	Large (Tall)	X-Large (Tall)	2X-Large (Tall)	3X-Large (Tall)	4X-Large (Tall)
	SBS1001	Gray	-	970492360	970492359	970492367	970492362	970492363	970792792
SBS1002	Navy	-	970786830	970786825	970492379	970492371	970492373	970492375	
SBS1003	Tan	-	970492382	970786831	970492389	970492385	970786833	970492387	

SBS200X Series - 7 oz. 100% FR Cotton Fabric (APTV 8.7 cal/c,m²)*

Regular	MCR	Color	Small	Medium	Large	X-Large	2X-Large	3X-Large	4X-Large
	SBS2001	Gray	970492308	970492306	970492304	970492315	970492309	970492311	970492313
SBS2002	Navy	970492321	970492319	970492317	970492330	970492322	970492324	970492326	
SBS2003	Tan	970492336	970492334	970492332	970492343	970492337	970492339	970492341	
SBS2006	Med Blue	970492349	970492347	970492345	970492356	970492350	970492352	970492354	

Tall	MCR	Color	Small (Tall)	Medium (Tall)	Large (Tall)	X-Large (Tall)	2X-Large (Tall)	3X-Large (Tall)	4X-Large (Tall)
	SBS2001	Gray	-	970492307	970492305	970492316	970492310	970492312	970492314
SBS2002	Navy	-	970492320	970492318	970492331	970492323	970492325	970492327	
SBS2003	Tan	-	970492334	970492333	970492344	970492338	970492340	970492342	
SBS2006	Med Blue	-	970492348	970492346	970492357	970492351	970492353	970492355	

LST1 Series

- 6.5oz.100% FR cotton fabric
- NFPA 2112 UL Certified
- NFPA 70E Hazard / Risk CAT2 protection
- ASTM F1506 Electric Arc Protection
- ASTM 1959 ATPV 10.6 cal/cm²
- Rib-knit crewneck keeps its shape



Regular	MCR	Color	Small	Medium	Large	X-Large	2X-Large	3X-Large	4X-Large
	LST1G	Gray	970492281	970492280	970492279	970492286	970492282	970492286	970492284
LST1N	Navy	970492289	970492288	970492287	970492295	970492290	970492292	970492293	
LST1T	Tan	970492298	970492297	970492296	970492303	970492299	970492300	970492301	



• DUPONT

Kevlar



3601K Sizes: S-XXXL

- Premium Grade Grain Goatskin
- 13 Gauge DuPont™ Kevlar® / Synthetic Liner
- Arc rated 37.5 cal/cm² (HRC3 / CAT3)

970731940
970716570
970716571
970718288
970718291
970731939

3601KS Small
3601KM Medium
3601KL Large
3601KXL X-Large
3601KXXL 2X-Large
3601KXXXL 3X-Large



• DUPONT

Kevlar



MU3624FR Sizes: M-XL

- Premium Grade Grain Goatskin
- Nomex® fabric back - excellent thermal stability
- DuPont™ Kevlar® Liner
- Double stitched, sewn with DuPont™ Kevlar® thread
- Arc rating: 24.7 cal/cm² (HRC2 / CAT2)

970763804
970763805
970763806

MU3624FRM Medium
MU3624FRL Large
MU3624FRXL X-Large



• DUPONT

Kevlar



MU3624K Sizes: M-XXL

- Premium Grade Grain Goatskin
- DuPont™ Kevlar® Liner
- Double stitched, sewn with DuPont™ Kevlar® thread
- Fourchette panels for enhanced fit
- Arc rating of 61.4 cal/cm² (HRC4 / CAT4)

970743350
970743349
970743348
970743350
970743351

MU3624KS Small
MU3624KM Medium
MU3624KL Large
MU3624KXL X-Large
MU3624KXXL 2X-Large



DM1328BZ

- BossMan™ Blue Diamond Mirror, Polarized
- Italian fashion, sport focused design
- Co-injected soft wire core adjustable TPR temples and nose pads

970744581 DM1328BZ



Coming Fall 2020

Memphis Style Glasses

- Lightweight sunglass design frame
- Soft, flexible TPR nosepad and temple sleeves for added comfort

970492390 MP112G

● Gray Green Lens



970492391 MP112PF

● MAX6™ Gray Anti-Fog Coated Lens

TOOLS THAT RISE ABOVE THE REST

Ripley Tools was founded in 1936 and continues to lead the market in manufacturing innovative cable infrastructure tools and test equipment. View our full line of CATV, RF, power, optical, & other tools at www.ripley-tools.com.







ODM® OTDR 800

Compact, Single-Mode Optical Test & Inspection Kit

- The OTDR 800 is the newest handheld OTDR from Ripley's ODM® brand that provides test technicians and contractors with an all-in-one solution for testing optical reflection and loss in fiber networks.
- Its compact, ergonomic design is easily portable. The OTDR 800 is one of the smallest and lightest OTDR's on the market weighing under 1.5 lbs. It features an adjustable, ambidextrous hand-strap and protective rubberized boot that makes testing a breeze in virtually any location.
- Part No: 970796516 | Manufacturer Part No: OTDR800-K1





UtilityTool® US01 Infinity Series

600V-35kV Adjustable Cable Stripper

- Adjusts from 0.5" to 2.5" (12.7 to 63.5 mm) cable diameters to efficiently strip jacket & insulation materials on primary & secondary cable
- Equipped with detachable, ergonomic handles to accommodate tight spaces
- Blade depth & angle are adjustable for versatility
- Patent-pending design aligns cable & maintains optimum blade position for precision
- Applications include mid-span & end stripping of aerial tree wire & spacer cables
- P/N 970747045 | Manufacturer Part No: US01-7000



UtilityTool® SCS

5-35kV Adjustable Cable Semi-Con Scoring Tool



- Compact & user-friendly scoring tool accommodates cable diameters from 0.31" to 2.0" (8 to 51 mm) with a 2" (51 mm) envelope for operating on larger cables
- Performs longitudinal, spiral & calibrated square cuts with easily replaceable blade
- Precise blade depth adjustment provides accurate semi-con scoring
- U.S. Patent No. D721,563
- Part No: 970472500 | Manufacturer Part No: 43630

UtilityTool® WS 68 SNAP

Power-Driven End Stripper with 3/8" Drill Drive

- Compatible with #6 AWG to 750 MCM & has adjustable strip lengths from 0.625" to 5.0" (15.875 to 127 mm)
- Easily attaches to power drill for safe & efficient operation; *adapters sold separately*
- Patent-pending quick connect collar design makes changing bushings faster & more efficient even with work gloves on
- Part No: 970060377 | Manufacturer Part No: 40100



Miller® MSAT® Series All Access Kit

Mid-Span Fiber Access Kit



- Accommodates 0.039" - 0.118" (1.0 - 3.0 mm) 0.5" to 2.5" cable diameters
- Kit Includes: Hard Plastic Case with Foam Lining; KS-1 Series Fiber Optic Kevlar® Shears; RCS-114 Series Hard Cable Jacket Stripper; FTS Series Buffer Tube Scorer; MSAT® 16 Series Mid-Span Fiber Access Tool; CFS-3 Series Fiber Optic Stripper
- Part No: 970799330 | Manufacturer Part No: MA03-7001

ODM® TTK 720

Compact, Single-Mode Loopback Test & Inspection Kit

- Compact test platform for fast & simple testing out in the field
- Automated & comprehensive PASS/FAIL analysis compliant with IEC 61300-3-35 industry standards
- Share closeout reports by email or save to cloud storage via Wi-Fi
- Kit Includes: VIS 300C-PM-02-V All-In-One Test Platform with On-Board InGaAs OPM & 635 nm VFL Red Laser; DLS 355 Dual Laser Source; SM Loopback Test Jumpers; Cleaning Tools; Hard Carry Case
- Part No: 970799331 | Manufacturer Part No: TTK720



Crescent H.K.Porter Ratcheting Guy Strand Cutter



- Notched shear-cut blades hold material firmly in place
- Ratchet and chain design produces easy, progressive cuts
- Makes clean, square cuts with minimal distortion

Altec	Item No	Description	Length	EHS Guy Strand	Common Guy Strand	Product Weight
900008690	8690CK	Guy Strand Ratchet Cutter	28 in	1/2 in, 13 mm	1/2 in, 13 mm	10.34 lbs.

Crescent H.K.Porter Ratcheting Hard Cable Cutter



- Jaw keeper prevents jaws from spreading while under heavy load
- Shear-cut blades
- Ratchet and chain design increase cutting pressure as handles open and close
- Used effectively with short strokes in confined spaces

Altec	Item No	Description	Length	ACSR, ACAR, ZEBRA and Telephone Cable (Self Supporting)	Product Weight
900708690	8690FH	Hard Cable Ratchet Cutter	29-1/4 in	1-3/16 in, 30 mm	12.4 lbs.

Crescent H.K.Porter Ratcheting Soft Cable Cutter



- Jaw keeper prevents jaws from spreading while under heavy load
- Heavy-duty jaw design
- Ratchet provides up to 5x the mechanical advantage over manual cutters

Altec	Item No	Description	Length	Copper and Aluminum Cable, Power/Comm Cable	Product Weight
900096207	8690FSK	Soft Cable Ratchet Cutter	29-3/4 in	3 in, 73 mm	12.6 lbs.

Crescent H.K.Porter Ratcheting Wire Rope Cutter



- Ratchet-type jaws with notched shear-cut blades
- Blades hold and lock material in place during the cut
- Cuts all strands with minimal crushing or distortion

Altec	Item No	Description	Length	EHS Guy Strand	Aircraft Cable, Hard Stainless Steel Cable	Product Weight
900786900	8690TN	Wire Rope Ratchet Cutter	36 in	5/8 in, 16 mm	5/8 in, 16 mm	11.0 lbs.

Better Because It's Stronger

Best in Class 1,500 lb. Working Load

- 1,500 lb. Working Load Limit
- 3:1 load safety design factor
- Lightweight aluminum alloy construction
- 3 inch permanently lubricated sheave
- Up to 5/8" rope capacity



Altec	Catalog No.	Description
970637557	7380303	Campbell 3" Aluminum Alloy Hand Line Block
970498440	7380300	Campbell 3" Fiberglass Reinforced Nylon Hand Line Block

* WORKING LOAD LIMIT (WLL) is based on Resultant Load. Know and DO NOT EXCEED the WLL of the block or blocks to be used.



M18 FORCE LOGIC™ HYDRAULIC PUMP KIT

M18™ FORCE LOGIC™ 10,000 PSI Hydraulic Pump Kit
970766848 2774-21HD



Bucket Hanger
970766850
49-12-2776
6ft Controller Extension
970766848 49-12-2775



M18 FORCE LOGIC™ 1590 ASR CUTTER

M18™ FORCE LOGIC™ 1590 ACSR Cable Cutter Kit
970700506 2777-21

Replacement Blades
970704037 49-16-2775



M18 FORCE LOGIC™ 6T PISTOL CRIMPER

M18™ FORCE LOGIC™ 6T Pistol Utility Crimper
970492241 2977-22BG BG-D3 Kit
970796771 2977-220 O-D3 Kit
970492242 2977-20 Bare Tool

NEW



M18 FORCE LOGIC™ KNOCKOUT KITS



970691897 2676-23

ALTEC	MILWAUKEE	DESCRIPTION
970691897	2676-23	10 TON TOOL 1/2"-4" KIT
970688865	2676-22	10 TON TOOL 1/2"-2" KIT
970709100	2676-20	10 TON TOOL KIT
970746125	2677-23	6 TON TOOL 1/2"-4" KIT
970691895	2677-21	6 TON TOOL 1/2"-2" KIT
970710031	2677-20	6 TON TOOL KIT



TOOLS TO GET THE JOB DONE RIGHT.



M18 FORCE LOGIC™ CRIMPER & CUTTER KITS

6T Utility



D3 Grooves & Fixed O Die
970666609 2678-220



Kearney Grooves
970666611 2678-22K



D3 Grooves & Fixed BG Die
970666608 2678-22BG

6T Utility Cutting Kits



750 MCM Cu/Al Jaws
970666613 2672-21



M18™ FORCE LOGIC™ 3" Underground Cable Cutter w/ Wireless remote
970704035 2776R-21

M18™ FORCE LOGIC™ Cable Cutter Kit w/ 477 ACSR Jaws
970746931 2672-21S

12T Utility



M18™ FORCE LOGIC™ 12 Ton Utility Crimper Kit
9970704699 2778-22

15T Utility



M18™ FORCE LOGIC™ 15T Crimper Kit
970766846 2879-22

15T P to U-Die Adapter
970766847 49-15-PUAD



Replacement Blades

ALTEC	MILWAUKEE	REPLACEMENT BLADES FOR:*
970765007	48-44-2778	FINE STRANDED WIRE
970757884	48-44-2777	1/2" EHS GUY WIRE
970718120	48-44-0412	477 ACSR
970709993	48-44-0411	750 MCM CU/AL

* Compatible with all 6T Utility Crimpers and Cutters

W Style Dies

ALTEC	MILWAUKEE	DIE
970667673	49-16-W161	W161
970667674	49-16-W162	W162
970667675	49-16-W163	W163
970667681	49-16-W164	W164
970667676	49-16-W165	W165
970667677	49-16-W166	W166
970667682	49-16-W237	W237
970667683	49-16-W239	W239

ALTEC	MILWAUKEE	DIES
970667678	49-16-W243	W-243
970667679	49-16-W247	W-247
970667680	49-16-W249	W-249
970766842	49-16-W840	W-K840
970667686	49-16-WBGO	W-BG
970667671	49-16-WCOO	W-C
970667670	49-16-W000	W-O
970667685	49-16-TREE	W DIE TREE

Crimping Jaws and Dies



BG Jaw
970666756
49-16-BGD3



O Jaw
970760339
49-16-10D3



Snub-Nose Jaw
970766841
49-16-11D3



Kearney Jaw
970666783
49-16-KEAR

Cutting Jaws and Blades



Wire Cutting Jaws

Fine Stranded
970766844
49-16-2778



1/2" EHS Guy
970740939
49-16-2777



477 ACSR Jaw
970666784
49-16-2773



750 MCM Cable Cutting Jaw
970666785
49-16-2772



877.GO ALTEC | CONNECT.ALTEC.COM/STORE





MX FUEL™ 14" CUT-OFF SAW
970786034 MXF314-1XC



**MX FUEL™ CARRY-ON™
3600W/1800W Power Supply**
970786115 MXF002
SHIPPING Q1 2021



**MX FUEL™ ROCKET™
Tower Light/Charger**
970492266 MXF041-XC
SHIPPING Q1 2021



**Breaker Dust
Extraction Attachment**
970492265 5321-DE

MX FUEL™ Breaker
970783884 MXF368-1XC



**MX FUEL™ REDLITHIUM™
CP203 BATTERY PACK**
970783878 MXFCP203



**MX FUEL™ REDLITHIUM™
XC406 BATTERY PACK**
970492267 MXFCP406



MX FUEL™ CHARGER
970783883 MXFC

M18 FUEL POWER TOOLS



**M18™ FUEL 1/2"
Hammer Drill Kit**
970750957 2804-22



**M18 FUEL™ 1/4" Hex
Impact Driver Kit**
970398459 2853-22



**M18 FUEL™ SAWZALL®
Reciprocating Saw Kit**
970476473 2720-22



**M18 FUEL™ 4-1/2" / 5"
Braking Grinder Kit**
970686727 2783-22



**MILWAUKEE® Intrinsically Safe
C I, II, III / D 1 Spot/Flood Headlamp Kit**
970797418 2004HZL

M18 FUEL LIGHTING



M18™ Utility Bucket Light Kit
970701145 2122-22HD

M18™ ROCKET™ Tower Light/Charger Kit
970696494 2135-21HD



**USB Rechargeable
BEACON™ Hard Hat Light**
970777364 2116-21



TOOLS TO GET THE JOB DONE RIGHT.



M18 FUEL IMPACTS



M18 FUEL™ 7/16" Hex Utility High Torque Impact Wrench w/ ONE-KEY™ Kit
970766852 2865-22



M18 FUEL™ 1" High Torque Impact Wrench w/ ONE-KEY™ Kit
970774871 2867-22



M18 FUEL™ 1/2" Compact Impact Wrench w/ Pin Detent Kit
970444188 2755-22



M18 FUEL™ 1/2" High Torque Impact Wrench with Friction Ring Kit
970730081 2767-22



M18 FUEL™ 1" D-Handle High Torque Impact Wrench w/ ONE-KEY™ Kit
970492243 2868-22HD

M18 FUEL

COMPACT MAGNETIC DRILL



M18 FUEL™ 1-1/2" Lineman Magnetic Drill High Demand™ Kit
970705208 2788-22HD

M18 FUEL OUTDOOR EQUIPMENT

M18 FUEL™ 10" Pole Saw Kit w/ QUIK-LOK™ Attachment Capability
970759016 2825-21PS



M18 FUEL™ 16" Chainsaw Kit
970746675 2727-21HD



M18™ Search Light Kit
970696483 2354-21



USB Rechargeable Hard Hat Headlamp
970732141 2111-21



USB Rechargeable Utility Hot Stick Light
970766865 2119-22



Penlight
970732529 2105



MILWAUKEE® Headlamp
970731890 2103





HAND TOOLS



High-Leverage Lineman's Pliers
970758601
48-22-6502



**High-Leverage Lineman's Pliers
with Thread Cleaner**
970753043
48-22-6503



10" Straight Jaw Pliers
970777340
48-22-6510



**3/8" Slotted - 8" Demo
Cushion Grip Screwdriver**
970739793 48-22-2825



**Lineman's 2-in-1 Insulated
Ratcheting Box Wrench**
970766960 48-22-9211



**Lineman's 4-in-1 Insulated
Ratcheting Box Wrench**
970766961 48-22-9212



Lineman's High Leverage Ratcheting Wrench
970766962 48-22-9213



Lineman's 5-in-1 Ratcheting Wrench
9970766963 48-22-9216

ACCESSORIES

SHOCKWAVE IMPACT DUTY



IMPACT AUGERS BITS

ALTEC	MILW	LENGTH	DIAMETER	ALTEC	MILW	LENGTH	DIAMETER
970751251	48-13-6700	3/8"	18"	970751257	48-13-6802	1/2"	24"
970751254	48-13-6702	1/2"	18"	970729513	48-13-6803	9/16"	24"
970729488	48-13-6703	9/16"	18"	970729506	48-13-6804	5/8"	24"
970729489	48-13-6704	5/8"	18"	970729505	48-13-6805	11/16"	24"
970729491	48-13-6705	11/16"	18"	970729504	48-13-6807	13/16"	24"
970729507	48-13-6707	13/16"	18"	970729503	48-13-6809	15/16"	24"
970729508	48-13-6709	15/16"	18"	970729500	48-13-6810	1"	24"
970729509	48-13-6710	1"	18"	970729499	48-13-6811	1-1/16"	24"
970729510	48-13-6711	1-1/16"	18"	970729497	48-13-6812	1-1/8"	24"
970729511	48-13-6712	1-1/8"	18"	970729496	48-13-6813	1-1/4"	24"
970729512	48-13-6713	1-1/4"	18"	970751259	48-13-6904	5/8"	30"
970751256	48-13-6800	3/8"	18"	970751260	48-13-6905	11/16"	30"
970751251	49-66-5155	3/8"	24"	970751261	48-13-6907	13/16"	30"
				970751262	48-13-6909	15/16"	30"





**Lineman's Blunt Tip
Hawkbill Knife w/
STICKWORK™ 3-in-1 Ring**
970766943 48-22-1923



**Lineman's Hawkbill Knife with
STICKWORK™ 3-in-1 Ring**
970766944 48-22-1924



Hawkbill Fixed Blade Knife
970748939 48-22-1925



FASTBACK™ Hawk Bill Folding Knife
970637281 48-22-1985



FASTBACK™ Hawkbill Folding Knife
970793792 48-22-1525



10" Adjustable Wrench
970774692 48-22-7410



12" Adjustable Wrench
970777339 48-22-7412



Composite Folding Rule
970698246 48-22-3801

Impact Adapters



**7/16" Hex to 1/2"
Square Adapter**
970729492
48-32-5100



**1/2" Square to 7/16"
Hex Quick Change Adapter**
970183149 48-66-0061



**Shockwave Lineman's 10PC
2-IN-1 12PT Socket Set**
970792233
49-66-5125



Utility Sockets



**Distribution
Utility Socket**
970729495
49-66-5101



**9/16" x 3/4"
6PT Shockwave
Lineman's
2-in-1 Socket**
970781083
49-66-5111



**9/16" x 3/4"
12PT Shockwave
Lineman's
2-in-1 Socket**
970778940
49-66-5121



J Hook Socket
970751253
49-66-5132



Penta Socket
970751249
49-66-5133



PERSONAL SAFETY STAY SAFE.
STAY PRODUCTIVE.

HARD HAT WITH BOLT™ (SMALL LOGO)



ALTEC	MILWAUKEE	DESCRIPTION
970492251	48-73-1021	FRONT BRIM VENTED HARD HAT W/ BOLT™ (TYPE 1 CLASS E)
970792857	48-73-1031	FULL BRIM HARD HAT WITH BOLT™ (TYPE 1 CLASS E)

SAFETY GLASSES

ALTEC	MILWAUKEE	DESCRIPTION	
970492252	48-73-2000	CLEAR SAFETY GLASSES	
970492253	48-73-2001	CLEAR SAFETY GLASSES (POLYBAG)	
970792675	48-73-2005	TINTED SAFETY GLASSES	
970492254	48-73-2006	TINTED SAFETY GLASSES (POLYBAG)	
970492255	48-73-2020	CLEAR HIGH PERFORMANCE SAFETY GLASSES	
970492256	48-73-2021	CLEAR HIGH PERFORMANCE SAFETY GLASSES (POLYBAG)	
970492257	48-73-2025	TINTED HIGH PERFORMANCE SAFETY GLASSES	
970492258	48-73-2026	TINTED HIGH PERFORMANCE SAFETY GLASSES (POLYBAG)	
970492259	48-73-2040	CLEAR HIGH PERFORMANCE SAFETY GLASSES WITH GASKET	
970492260	48-73-2041	CLEAR HIGH PERFORMANCE SAFETY GLASSES WITH GASKET (POLYBAG)	
970793001	48-73-2045	TINTED HIGH PERFORMANCE SAFETY GLASSES WITH GASKET	
970492261	48-73-2046	POLARIZED HIGH PERFORMANCE SAFETY GLASSES WITH GASKET (POLYBAG)	



MILWAUKEE	DESCRIPTION	SMALL	MEDIUM	LARGE	X-LARGE	2X-LARGE
48-73-8922	HIGH VIS - POLYURETHANE DIPPED CUT LEVEL 2	970492449	970492450	970492244	970492451	970492452
48-73-8932	HIGH VIS - POLYURETHANE DIPPED CUT LEVEL 3	970492453	970492414	970792348	970492415	970492416
48-73-8942	HIGH VIS - POLYURETHANE DIPPED CUT LEVEL 4	970492417	970492418	970492245	970492419	970492420
48-73-0012	GOATSKIN LEATHER GLOVES	970492421	970492422	970492246	970492423	970492424
48-22-8902	CUT 1 NITRILE GLOVES	970492425	970492426	970754533	970492427	970492428
48-22-8932	CUT 3 NITRILE GLOVES	970492429	970492430	970492247	970492431	970492432
48-22-8952	CUT 5 NITRILE GLOVES	970492433	970492434	970767017	970492435	970492436
48-22-8912	CUT LEVEL 1 WINTER GLOVES	970492437	970492438	970492248	970492439	970492440
48-22-8922	CUT LEVEL 3 WINTER GLOVES	970492441	970492442	970492249	970492443	970492444
48-73-0022	LEATHER PERFORMANCE GLOVES	970492445	970492446	970492250	970492447	970492448

EAR PLUGS

ALTEC	MILWAUKEE	DESCRIPTION
970492262	48-73-3001	10 PAIR EAR PLUGS
970792387	48-73-3005	100 PAIR EAR PLUGS
970492263	48-73-3006	100 PAIR EAR PLUGS (INDIVIDUALLY SEALED PAIRS)
970492264	48-73-3151	3PK REUSABLE CORDED EARPLUGS



SAWZALL BLADES

THE AX™ BI-METAL

NAIL EMBEDDED
WOOD BLADES



ALTEC	MILWAUKEE	DESCRIPTION
970492268	48-00-5021	6" 5TPI 5PK
970492269	48-00-8021	6" 5TPI 25PK
970492270	48-01-2001	6" 5TPI 10PK (BULK)
970492271	48-01-2021	6" 5TPI 25PK (BULK)
970492272	48-01-7021	6" 5TPI 100PK (BULK)
970747751	48-00-5026	9" 5TPI 5PK
970752716	48-00-8026	9" 5TPI 25PK
970492273	48-01-2006	9" 5TPI 10PK (BULK)
970492274	48-01-2026	9" 5TPI 25PK (BULK)
970774429	48-01-7026	9" 5TPI 100PK (BULK)
970492275	48-00-5027	12" 5TPI 5PK
970752715	48-00-8027	12" 5TPI 25PK
970492276	48-01-2007	12" 5TPI 10PK (BULK)
970492277	48-01-2027	12" 5TPI 25PK (BULK)
970774476	48-01-7027	12" 5TPI 100PK (BULK)

THE AX™ WITH CARBIDE TEETH

NAIL EMBEDDED
WOOD BLADES



ALTEC	MILWAUKEE	DESCRIPTION
970757095	48-00-5221	6" 5TPI 1PK
970757096	48-00-5226	9" 5TPI 1PK
970757097	48-00-5227	12" 5TPI 1PK
970757099	48-00-5321	6" 5TPI 3PK
970757100	48-00-5326	9" 5TPI 3PK
970757101	48-00-5327	12" 5TPI 3PK
970751348	48-00-5521	6" 5TPI 5PK
970751350	48-00-5526	9" 5TPI 5PK
970751830	48-00-5527	12" 5TPI 5PK



PACKOUT™ STORAGE

ALTEC	MILWAUKEE	DESCRIPTION
970755416	48-22-8426	PACKOUT™ ROLLING TOOL BOX
970755418	48-22-8425	PACKOUT™ LARGE TOOL BOX
970755419	48-22-8424	PACKOUT™ TOOL BOX
970794208	48-22-8422	PACKOUT™ COMPACT TOOL BOX
970492278	48-22-8440	PACKOUT™ CRATE
970762403	48-22-8450	PACKOUT™ TOOL CASE W/ CUSTOMIZABLE INSERT
970754363	48-22-8430	PACKOUT™ ORGANIZER
970746457	48-22-8435	PACKOUT™ COMPACT ORGANIZER
970759135	48-22-8431	PACKOUT™ LOW-PROFILE ORGANIZER
970754362	48-22-8436	PACKOUT™ LOW-PROFILE COMPACT ORGANIZER
970766352	48-22-8310	PACKOUT™ 10" TOTE
970755960	48-22-8315	PACKOUT™ 15" TOTE
970735096	48-22-8320	PACKOUT™ 20" TOTE
970765692	48-22-8321	PACKOUT™ 15" TOOL BAG
970762504	48-22-8322	PACKOUT™ 20" TOOL BAG
970761531	48-22-8301	PACKOUT™ BACKPACK
970492237	48-22-8300	PACKOUT™ TECH BAG
970492238	48-22-8460	PACKOUT™ 16QT COMPACT COOLER
970765407	48-22-8302	PACKOUT™ COOLER
970492239	48-22-8485	PACKOUT™ MOUNTING PLATE
970781879	2950-20	M18™ PACKOUT™ RADIO + CHARGER
970492240	48-22-8410	PACKOUT™ DOLLY



877.GO ALTEC | CONNECT.ALTEC.COM/STORE

**Altec
Supply.**



Get Insulated

Provide another line of defense with Gator® Insulated Battery Hydraulic Cutting and Crimping tools. The world's first tools of their kind designed to help offer protection from electric shock up to 1000V.



INSULATED CRIMPING TOOLS



EK6IDCVX11 EK425VXDBG11 EK628VX11 EK425VXDBG11

P/N 970794253 **EK6IDCVX11**
 P/N 970794257 **EK622CVX11**
 P/N 970794261 **EK628VX11**
 P/N 970794265 **EK425VXDBG11**

All tools include a high capacity Makita® 18V LXT Li-Ion 4.0Ah battery. Makita and LXT are registered trademarks of MAKITA CORPORATION. The Bluetooth® word mark is a registered trademark owned by Bluetooth SIG, Inc.



INSULATED CUTTING TOOLS



ESC50HVX11 ESC35HVX11 ES32HVX11 ESC25HVX11 ES20HVX11

P/N 970794249 **ESC50HVX11**
 P/N 970794245 **ESC35HVX11**
 P/N 970797237 **ES32HVX11**
 P/N 970794241 **ESC25HVX11**
 P/N 970794233 **ES20HVX11**

CU/AL CUTTERS





IN-LINE CRIMPER – EK425LXDO12, EK425LXDBG12, EK425LXDOBG11, EK425XL11DO-ACSR

P/N 970700010, P/N 970699630,
P/N 970699629, P/N 970699899

- Intelli-CRIMP® technology notifies operator with a visual and audible alert in real time if crimp force is not achieved
- One trigger controls all tool functions
- Crimping head rotates 350°
- Patented spring pin jaw engagement
- LED work light illuminates dark work areas
- LED display with real time PSI reading
- Bluetooth® enabled



IN-LINE ACSR CUTTER – ES20LX11

P/N 970718264

- Designed primarily to cut distribution up to 336 ACSR
- Scissor style blades make access easy to short tag ends with H-tap connectors
- One trigger controls all tool functions
- Cutting head rotates 350°
- Tool automatically retracts when the cutting cycle is complete



IN-LINE ACSR CUTTER – ESG45LX11

P/N 970700097

- Designed specifically to cut up to 1590 ACSR, 1/2" guy strand and 5/8" ground rods
- Retraction Stop allows the operator to stop the ram retraction at any point simply by tapping the trigger, and then starting the next cutting cycle from that point saving time and energy
- Two-stage hydraulic system provides fast advance and power speeds
- One trigger controls all tool functions
- Cutting head rotates 350°
- Tools automatically retract when the cutting cycle is complete



IN-LINE ACSR CUTTER – ESC25LX11, ESG25LX11

P/N 970754237 (left), P/N 970700519 (right)

- Designed to cut up to 636 ACSR, EHS guy 1/2", and 3/8" ground rod
- Equipped with retraction stop to aid in time and battery savings
- Replaceable hardened blades for increased tool longevity



IN-LINE CABLE CUTTER – ESC35LX11

P/N 970706261

- Designed to cut up to 1.38" CU/AL cables
- Cutting head rotates 350°
- Tool automatically retracts when the cutting cycle is complete
- Overmolded tacky grip area make gripping the tool easier and more comfortable
- Retraction stop feature reduces time between cuts on smaller wire sizes

COPPER/ALUMINIUM CUTTER



PISTOL STYLE CABLE CUTTER – ESG105LX120, ESG105LXR120

P/N 970731355 (top), P/N 970799100 (bottom)

- Designed to cut up to 4.15" CU/AL cables
- 350° rotating guillotine cutting head
- Single trigger operation
- Automatic retraction after completed cycle

ESG105LXR Remote Control Cable Cutter

- LED level indicator on battery and built-in tool self-test confirms ability to complete cut
- Select between Hand-Held Manual and Remote usage options
- Double tap trigger operation protects unintentional blade engagement
- Equipped with end-position blade sensor to communicate when cable has been terminated

COPPER/ALUMINIUM CUTTER





6-TON IN-LINE INDENTER – EK6IDLX11

P/N 970732022

- Two-stage telescopic ram design identifies correct pressure to apply
- Single trigger operation for controlling all tool functions



DIELESS



6-TON IN-LINE AND PISTOL QUAD POINT INDENTERS – EK6FTILX11, EK6FTLX11

P/N 970782867 (top), P/N 970731263 (bottom)

- Intelli-CRIMP® technology notifies operator with a visual and audible alert in real time if crimp force is not achieved
- Automatic Retraction Stop (ARS) retracts the ram just enough to get ready for the next cycle, saving time and energy
- Flip-top style uses a pull pin to open head for easy removal from the connector
- One trigger controls all tool functions
- In-line quad point crimper (EK6FTILX11)
- Pistol quad point crimper (EK6FTLX11)
- All quad point crimpers rotate 360°



DIELESS



12-TON PISTOL CRIMPER – EK1240LX12, EK1240KLX11

P/N 970704771, P/N 970720325

- Intelli-CRIMP® technology notifies operator with a visual and audible alert in real time if crimp force is not achieved
- Automatic Retraction Stop (ARS) retracts the ram just enough to get ready for the next cycle saving time and energy
- One trigger controls all tool functions
- Crimping head rotates 350°
- EK1240L with 1.65" (42 mm) opening uses Greenlee KC12, KA12 & KD12 crimping dies plus all industry "U" style crimping dies, EK1240KL uses Kearney PH2 style crimping dies





15-TON PISTOL CRIMPER – EK1550FLX

P/N 970731331

- Intelli-CRIMP® technology notifies operator with a visual and audible alert in real time if crimp force is not achieved
- Automatic Retraction Stop (ARS) retracts the ram just enough to get ready for the next cycle, saving time and energy
- Accepts P-style die to crimp splices and lugs up to 1500 kcmil copper and 1250 kcmil aluminum
- Accepts Kearney PH4/P14 dies without adapter
- Crimping head rotates 350°
- Includes UA15T U Die Adapter



Kearney is a trademark of Eaton



12-TON PISTOL CRIMPER – EK1240LX12, EK1240KLX11

P/N 970704771, P/N 970720325

- Intelli-CRIMP® technology notifies operator with a visual and audible alert in real time if crimp force is not achieved
- Automatic Retraction Stop (ARS) retracts the ram just enough to get ready for the next cycle saving time and energy
- One trigger controls all tool functions
- Crimping head rotates 350°
- EK1240L with 1.65" (42 mm) opening uses Greenlee KC12, KA12 & KD12 crimping dies plus all industry "U" style crimping dies, EK1240KL uses Kearney PH2 style crimping dies



MULTI-TOOL – GRE-6, UT-D3HS11

P/N 970492409, P/N 970492410

- Interchangeable heads allow for the tool to be customized to meet individual needs – cut wire and crimp lugs
- In-line design for easy, one-handed operation, 360° head rotation enables maneuverability in tight spaces
- Built-in sensors and LED indicators ensure tool performance, monitor battery life and indicate when the tool requires service
- 3-in-1 tool saves valuable cargo space and eliminates trips back and fourth to the truck searching for different tools



COPPER/ALUMINIUM CUTTER



intell-crimp_Greenlee.psd



GROUND ROD DRIVER – HRD-1, HRD-58

P/N 900011193, P/N 900011192

- A deep rod opening and smooth operation ensures that the driver will not jump off of rods
- Light weight allows easy mounting on top of rods
- Pump is able to run dry for longer working life
- Dual guide rods provide excellent control for driving rods straight, and the remote on/off valve makes it easy to control the depth of the rod



LONG-REACH CHAIN SAW – 43178

P/N 701069018

- Cool Grip™ handle eliminates heat transfer
- Cuts hard-to-reach branches from aerial basket or from the ground
- Super Spool™ selector control for use on Open- and Closed-Center hydraulic systems
- Available in three lengths
- Insulated fiberglass extension tubes, tested to meet OSHA Regulation 1910.269
- Safety features include: two-step trigger, trigger guard, and fully covered sprocket guard
- Anti-kickback chain and automatic chain oiler
- Rugged high torque gear motor
- Unfilled and foam-filled extension tube versions offered



LOW PRESSURE HYDRAULIC TOOLS – H8508-1, H8508-1V

P/N 701069023, P/N 812620300

- Twin-hammer impact mechanism provides high performance and reliability
- Reversing spool to switch between forward and reverse rotation
- One-piece handle and impact housing casting provide long life
- Super Spool permits quick switches between open center and closed-center hydraulic systems
- Heat-insulated handle, ergonomically positioned for comfort
- Well balanced for comfortable operation
- Includes the 49314 heavy duty 1/2" square drive adapter, toughest adapter on the market



Pull Easier. Reset Faster. Run After Run.



G1 VERSI-TUGGER™

P/N 970492411

- Handheld, cordless puller
- Constant pull force up to 600 lbs
- Unload poly line in seconds after a pull – line slides off tapered capstan when spool wall is removed, no need to reverse the drill
- Pull 68% faster than manual pulling
- Works most 18V-20V cordless drills
- Adjustable boom – The 17" rotatable boom quickly adjusts to fit each job with 3 length positions to choose from. Extend the boom with 1" rigid conduit
- Universal pulling head – One-size-fits-all pulling head attaches quickly to any size conduit from 1/2" – 4"





NEXT GENERATION V-WATCH® PERSONAL VOLTAGE DETECTOR – VWS-20 P/N 970733028

- Provides another level of safety for line crews, storm restoration workers and first responders
- Alerts user to the proximity of electric fields or energized electrical equipment with a loud alarm and bright lights
- Frequency of alarm increases as the user gets closer to the electrical hazard
- Detects voltage above 4kVAC line-to-line
- Typical initial warning distance is about 7 ft (2.13 m) from a 4kVAC conductor
- Warning distance increases with higher voltages
- Adjustable clip for use on personal protection gear
- Field replaceable AAA batteries with low battery indicator



LOOKOUT VOLTAGE DETECTION NETWORK – LO-P6E P/N 970492412

- Warns of high voltage electric fields using WAVi® technology – Work Area Voltage Indication
- Visual and audible warning indicates the location of energized fields in a red-yellow-green sequence
- Detectors communicate with each other within a mesh network
- Remotely control detectors through the LOOKOUT® mobile app
- Battery life of up to 500 hours in Monitor mode and up to 8 hours in Alert mode
- Durable water-resistant housing



Proximity Voltage Detectors – PRX-69D/ K01, PRX-500 P/N 970444076 (left), P/N 970280266 (right)

- Capacitive test point mode included in the 120VAC setting
- Seven preset standard distribution ranges from 120VAC to 69kVAC (PRX-69D/K01)
- Preset with nine standard voltage ranges from 120VAC to 500kVAC (PRX-500)



TAG® WIRELESS PHASER – T200/KIT1248, T200/KIT1235

P/N 970761821, P/N 970552583

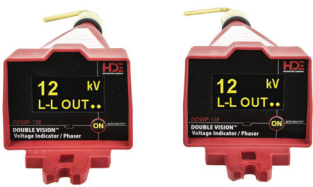
- Direct contact solution to quickly test for the presence of voltage
- No on/off or range selector switches – always on
- Clear indication of voltage detection with both audible and visual indications
- All-Check® Self-Test System verifies proper operation
- Various models available for use on system voltages up to 69kV line-to-line
- Versatile for overhead and underground applications



DIGITAL VOLTAGE INDICATORS – DVI-100T/K02, DVI-100/K01, DVI-100

P/N 97044467, P/N 970297815, P/N 970444065

- Display is easy to read from a distance and in bright or dark conditions
- Large, bright 2 or 3-digit LED display
- One-button operation for test modes
- Universal spline attachment



DOUBLE VISION® DUAL DISPLAY VOLTAGE INDICATING PHASER – DDVIP-138/K02

P/N 970492413

- Measures voltage from 100V to 138kV line-to-line
- Can be used individually as voltage indicators or together for phasing operations up to 100 ft (30 m) apart
- Two LED displays are automatically synchronized during phasing operations
- Clear in-phase and out-of-phase indication
- Versatile for overhead and underground applications
- Capacitive Test Point and Peak Hold modes



DIGIVOLT® DIGITAL VOLTMETER – DVM-80UVM/K05

P/N 970457209



- Measures voltage and performs phasing operations from 50V to 40kV and up to 80kV with add-on resistors
- Provides consistent high accuracy voltage measurements – within 1% of reading
- Auto-ranging – no settings required
- Capacitive Test Point mode available
- Auto-shutoff and low battery indicator features
- Versatile for overhead and underground applications

UNDERGROUND CABLE FAULT TESTER – UCT-8/K01

P/N 970729471



- Compact and lightweight solution for underground cable testing
- DC Hi-Pot test of de-energized, shielded underground primary cable
- Can be used on cable lengths up to 1500 ft (457 m)
- Clear and simple test results – analog bar graph and indication of good or faulted cable
- Lightweight, single hot stick operation for testing cable
- No external power required – self-contained 8KVDC voltage source
- Safety feature – measures AC voltage before converting to a DC voltage tester

HIGH VOLTAGE AMMETER – HVA-2000

P/N 970588612



- Measures AC current from 1 to 2000 Amps on system voltages up to 500kV line-to-ground
- Stores the last 4 readings
- Dual measurement modes – peak hold and real time
- Takes spot-load checks with ease
- Verifies phases are balanced
- Versatile for overhead and underground applications
- Compact, lightweight design

NO. 87 ACSR CABLE TRIMMER KIT – 54135

P/N 900054135



- Trim 85 sizes of ACSR cable from 8 AWG to 1,780,000 circular mils (C.M.)
- Simple operation – secure on cable and twist to cut
- Includes 9 popular cable size bushings from 1/0 AWG to 1,780,000 C.M.
- Unit includes carrying case, bushing holder and cutter
- Carry case stores 11 bushings. 12th bushing is stored in holder

NO. 87 ACSR CABLE TRIMMER – 54135R

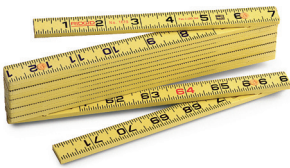
P/N 970796032



- Trim 85 sizes of ACSR cable from 8 AWG to 1,780,000 circular mils (C.M.)
- Simple operation – secure on cable and twist to cut
- Includes 9 popular cable size bushings from 1/0 AWG to 1,780,000 C.M.
- Unit includes carrying case, bushing holder and cutter
- Carry case stores 11 bushings. 12th bushing is stored in holder

FIBERGLASS FOLDING RULER – 73365

P/N 970681641



- Heavy-duty, flexible fiberglass construction with easy-to-read boldface figures and graduations
- Positive locking joints with red 16" stud marks
- Two-sided measurement – read in inches on one side and millimeters on the other

**MODEL 700 POWER DRIVE – 632-41935****P/N 970777186**

- Heavy-duty, professional hand-held power drive
- Made for use with RIDGID® model 12-R die heads
- Can be used with RIDGID 258 and 258XL pipe cutters
- Compatible with RIDGID 00-R, 00-RB and 11-R die heads when separate adapter is used

**14 GALLON WET/DRY VAC****P/N 970796211**

- 11 AMP, 2-stage motor for powerful high-lift suction, powerful blowing and efficient air flow
- 2-piece heavy-duty polypropylene drum construction
- Oversized drain for fast drainage
- Sturdy pushcart with large rear wheels for ease of use up and down stairs or over rocky terrain
- Patented Scroll Noise Reduction® for quiet operation
- Kit includes vacuum, 2 extension wands, 2 1/2" x 8' professional locking hose, utility nozzle, wet nozzle, crevice tool, car nozzle and fine dust filter.

HANDLINE ASSEMBLIES

- Handlines are constructed using 1/2" Polyale Plus Braided Rope
- Easily spliced
- Resists rotation under load
- Utilizes a newly designed drop-forged steel handline hook, durable nylon block, and double-locking steel snaphook



500 lb. SWL (Safe Working load)*

- P/N 970794837 60' Handline Length
- P/N 970794838 80' Handline Length
- P/N 970794839 100' Handline Length
- P/N 970794840 120' Handline Length

* Safe Working Load (SWL) is a 5:1 ratio, limiting the safety factor to life and carry and load safely. It must be clearly marked on any lifting device.

NON-FR MASK

- Polyester/Cotton
- Cotton mouth covering
- Elastic straps around ears



P/N 970797936 Non-FR Mask (above)

FR-RATED MASKS

- FR Twill Facemask
- 3 layer mask
- FR cotton straps

- P/N 970796563 FR Black
- P/N 970796579 FR Blue



KN95 MASK



- NIOSH approved
- "N95" masks provide 95% filtration efficiency against airborne particles
- Not resistant to oil
- Soft and comfortable fit with a flat design to easily fit inside pockets
- Adjustable nosepiece (with inside foam padding) provides a proper fit
- Latex-free adjustable rubber headstrap
- Easy to put on with clear and simple fitting instructions

P/N 970794919

SURGICAL FACE MASK



- Soft and comfortable fit
- Not resistant to oil
- Flat design easily fits in pockets
- Adjustable nosepiece (with inside foam padding) provides a proper fit
- Adjustable nosepiece (with proper fit)

P/N 970794922

GERMISEPT MULTI-PURPOSE ALCOHOL WIPES



- 50 Count, 75% Alcohol Wipes
- Multi-purpose - for hands and surfaces

P/N 970796915



RAINBOW 81537 HAND SANITIZER

- Healthcare personnel hand rub to help reduce bacteria that can potentially cause illness
- Non-sterile solution
- Mixture: Ethyl Alcohol >80%, Water <18.425% Glycerin >1.45%, Hydrogen Peroxide >0.125%
- 12 Bottles per case

P/N 970797337 81537 4 oz. Bottle w/Mist Sprayer (Must order by the Case - Qty 12)





CLAMP PIN — For holding insulating rubber blankets in place. Rubberized clamp tips and jaws are permanently molded onto the clamp to avoid cracking or splitting.

970746289 Rubber Blanket Clamp Pin without Shotgun Eye

970730967 Rubber Blanket Clamp Pin with Shotgun Eye



WITHOUT SHOTGUN EYE



WITH SHOTGUN EYE

NUT RUNNER — Impact Socket used on Distribution Poleline Hardware. The hollow-bore shaft accepts bolt length of 6 inches.

970767828 Nut Runner with 7/16" Hex Adapter (10" Length)

970767829 Hex Adapter Only for Nut Runner (3-1/2" Length)



WITH ADAPTER



ADAPTER



DISCONNECT HEAD

— Aluminum material with universal attachment.

970684259 Disconnect Head with Universal Spline



PENTA SOCKETS

— Deep Well, for 3/8" and 1/2" drives.

970184723 Penta Socket, 3/8" Drive

970184725 Penta Socket, 1/2" Drive



ROTATING TIE HEADS

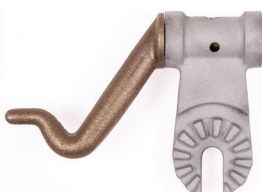
— For universal head attachment.

970684264 Rotating Blade Tie Head with Universal Spline

970684265 Rotating Prong Tie Head with Universal Spline



ROTATING BLADE



ROTATING PRONG



T-HANDLE PENTA

— All metal T-Handle Penta socket used on Underground Residential Distribution cabinets.

970184722 BW-99 T-Handle Penta Socket



BATTERY-OPERATED IMPACT WRENCHES & 7-TON CRIMPERS



970775226



7-Ton Pistol Crimper

Altec Cat. No.	Klein Tools Cat. No.	Description	Maximum Cable Capacity (MCM)					Included
			Cu	AL	ACSR	Guy Strand	Ground Rod	
970775226	BAT20GD1	EHS Closed-Jaw Cutter, 2 Ah	750	1500	1590	1/2" EHS	5/8"	Batteries, charger & bag
970779326	BAT20GD14H	EHS Closed-Jaw Cutter, 4 Ah						Batteries, charger & bag
970492454	BAT207T23	Crimper, O+ Die Head, 2 Ah	600	350	477	—	—	O fixed die/D3 groove crimping jaw, batteries, charger & bag
970492455	BAT207T1	Crimper, BG Die/ D3 Groove, 2 Ah						BG fixed die and D3 groove head, batteries, charger & bag
970492456	BAT207T9	Cutting Head ONLY	750	1000	—	—	—	—
970492457	BAT207T10	Cutting Head ONLY	500	500	556	—	—	—
970492458	BAT207T11	Cutting Head ONLY	—	—	7/16"	3/8" Grade 8 bolt	—	—

BATTERY-OPERATED IMPACT



970732848



970796788

970796789



970492462

Altec Cat. No.	Klein Tools Cat. No.	Description	Drive Size	Max Torque	Max Speed RPM	Included
970732848	BAT20-7161	Impact Wrench Kit	7/16" Quick Connect	500 ft-lbs	1900	Batteries, charger & bag
970732844	BAT20-716	Impact Wrench				Tool only
970492459	BAT20CD1	Compact Impact Driver Kit	1/4" Hex Quick Connect	210 ft-lbs	2200	Batteries, charger & bag
970796788	BAT20CD	Compact Impact Driver				Tool only
970492460	BAT20CW1	Compact Impact Wrench Kit	1/2" Square Pin Detent	300 ft-lbs	1800	Batteries, charger & bag
970796789	BAT20CW	Compact Impact Wrench				Tool only
970492461	BAT20LW1	Right-Angle Impact Wrench Kit	1-1/8", 1", 13/16" & 3/4" Square	300 ft-lbs	1800	Batteries, charger & bag
970492462	BAT20LW	Right-Angle Impact Wrench				Tool only

CABLE CUTTERS



970330038



900063060



970640802



900063045

Altec Cat. No.	Klein Tools Cat. No.	Description	Maximum Cable Capacity (MCM)				Overall Length
			Cu	AL	ACSR	Communication Cable	
970330038	63607	Ratcheting ACSR	400	600	336	1-1/8" diameter	10.25"
900063060	63060	Ratcheting	600	750	—	—	10.25"
970640802	63041TH	Standard	500	750	—	1-3/8" diameter	25.5"
900063045	63045	Standard	1000	1200	—	1-3/4" diameter	32"



2-IN-1 AND DISTRIBUTION IMPACT SOCKETS

- Two coaxial spring-loaded sockets in one tool
- 7/16" hex quick-change adapter included (NRHD models)



970330033



970732827



970800962



970761530

Altec Cat. No.	Klein Tools Cat. No.	Socket Sizes	Point
970761530	66010	1-1/8" x 15/16", 1" x 13/16", 7/8" x 11/16", 3/4" x 9/16", 5/8" x 7/16", & 1/2" x 3/8"	12
970800962	66040	3/4", 9/16", & 7/8" x 11/16", 5/8" x 7/16", 1/2 x 3/8", 1/4" Hex x 1/2" Adapter	12
970732730	66001	3/4" & 9/16"	12
970732829	66004	3/4" & 9/16"	6
970800994	66031	Slotted Socket with 3/4" & 9/16"	12
970732827	NRHD4	3/4", 13/16", 1" & 1-1/8" square	—
970330033	NRHD	3/4", 1" & 1-1/8"	—

LINEMAN WRENCHES

- Up to 20% Stronger than previous models for added durability

970329870

970664793



970184078

970232048

Altec Cat. No.	Klein Tools Cat. No.	Description	Sizes		Tether	Overall Length
			Square	Hex		
970184078	KT151T	4-in-1	1-1/8", 1"	—	•	13" (33 cm)
970664793	KT152T	4-in-1 Slim	13/16", 3/4"	9/16", 3/4"	—	13.25" (34 cm)
970232048	KT155T	6-in-1	—	—	—	12" (31 cm)
970329870	KT155HD	6-in-1 Heavy-Duty	—	—	—	9.4" (24 cm)

INSULATING LINEMAN 4-IN-1 BOX WRENCH

- Meets the ASTM 1505-10 standard 1000V rating
- "See-through" insulating handle confirms metal ends are not connected



970492463

Altec Cat. No.	Klein Tools Cat. No.	Description	Sizes	Points
970492463	KT223X4-INS	4-in-1	1/2", 9/16", 5/8" & 3/4"	12



VOLTAGE TESTERS AND CLAMP METERS



Altec Cat. No.	Klein Tools Cat. No.	Description	Voltage Range	Length	Weight
970682341	HVNCVT-1	Dual Range High Voltage Tester	HIGH: 1.5kV AC – 132kV AC LOW: 50V AC – 1.5kV AC	13"	0.66 lbs
970682342	HVNCVT-2	Broad Range Non-Contact Voltage Tester	up to 230kV AC	10.4"	1.37 lbs
970492464	TI250	Rechargeable Thermal Imager	—	3.1"	8.5 oz

Altec Cat. No.	Klein Tools Cat. No.	Functions	Voltage	Current	Included
970714747	CL600	Measures AC current, AC/DC voltage, resistance, continuity and tests diodes	1000V AC; 1000V DC	600A	Carrying Case, Test Leads, Batteries
970492465	CL900	Low Impedance (LoZ) Mode; Dedicated Mode for Capturing Inrush Current; Integrated Non-Contact Voltage Tester	1000V AC; 1000V DC	2000A AC/DC	Carrying Case, Test Leads, Batteries

INSULATED TOOLS



Altec Cat. No.	Klein Tools Cat. No.	Description	Included
970793455	32288	8-in-1 Insulated Interchangeable Screwdriver Set	Pouch, Handle, #2PH Single-End Blade, 1/4" SL Single-End Blade, #1SQ / #2SQ Double-End Blade, #1PH / 3/16" SL Double-End Blade, & #2PH / 1/4" SL Double-End Blade
970492466	6946INS	Slim-Tip 1000V Insulated Screwdriver, #2 Square, 6" Round Shank	
970492467	6924INS	Slim-Tip 1000V Insulated Screwdriver, 1/4" Cabinet, 4" Shank	
970492468	6916INS	Slim-Tip 1000V Insulated Screwdriver, 3/16" Cabinet, 6" Round Shank	
970658202	20009NEEINS	Heavy Duty Insulated Side-Cutting Pliers	
970801144	50210EINS	Slim Handle Insulated Pump Pliers	
970801145	63050-EINS	High-Leverage Insulated Electrician's Cable Cutter	



KLEIN TOOLS®



970785655



970492469



970800968



970800970



970800971



HARD HATS

Altec Cat. No.	Klein Tools Cat. No.	Description	Vented	Class	Shell Color
970785655	60406	Full Brim with Headlamp	No	E	White
970800966	60400	Full Brim	No	E	White
970800968	60249	Full Brim	No	E	Blue
970492469	60100	Cap Style	No	E	White
970800969	60145	Safety Helmet	No	E	White
970800970	60146	Safety Helmet with Headlamp	No	E	White
970800971	60147	Safety Helmet	No	E	Blue
970800974	60148	Safety Helmet with Headlamp	No	E	Blue

HARD HAT ACCESSORIES AND ILLUMINATION



970800974



970754843



970777337

Altec Cat. No.	Klein Tools Cat. No.	Description	Special Features	Lumens	Battery Life
970754843	56034	Rechargeable Auto-Off Headlamp	Lamp, Bracket, Silicone Strap, USB Charging Cord	Spot: HIGH: 200; Flood: LOW: 100	Spot: HIGH: 12 hrs.; Flood: LOW: 22 hrs.
970800974	56048	Rechargeable Auto-Off Headlamp	Light Array, Magnet, Battery Gauge, Fabric Strap with Pencil/Marker Holder	HIGH: 400; LOW: 100	Spot: HIGH: 4 hrs.; Flood: LOW: 22 hrs.

Personal Light

970777337	56403	Rechargeable Personal Worklight	Micro-USB Cord, DC 5V, 1.3A	HIGH: 460 Lumens for 9 hrs; LOW: 175 Lumens for 16 hrs	HIGH: 9 Hours; LOW: 16 Hours
-----------	-------	---------------------------------	-----------------------------	--	------------------------------



TOOLS TO GET THE JOB DONE RIGHT.



VISORS



970800976



970800983

Altec Cat. No.	Klein Tools Cat. No.	Description	Visor Color
970800976	VISORCLR	Clear, Detachable Half-Face Visor ANSI Z87.1U6	Clear
970800983	VISORGRAY	Tinned Gray Detachable Half-Face Visor ANSI Z87.1U6	Tinned Gray

SAFETY GLASSES



970800985 and 970800986



970800987 and 970800988



970800989 and 970800990

Altec Cat. No.	Klein Tools Cat. No.	Description	Color
970800985	60159	Standard Semi-Frame Narrow Frame ANSI Z87.1+	Clear
970800986	60160	Standard Semi-Frame Narrow Frame ANSI Z87.1+	Gray
970800987	60161	Pro Semi-Frame Wide Lens ANSI Z87.1+	Clear
970800988	60162	Pro Semi-Frame Wide Lens ANSI Z87.1+	Gray
970800989	60163	Pro Full Frame Wide Lens ANSI Z87.1+	Clear
970800990	60164	Pro Full Frame Wide Lens ANSI Z87.1+	Gray

HAMMERS



970324203



83226

Altec Cat. No.	Klein Tools Cat. No.	Description	Handle	Head Weight
970324203	809-36MF	Lineman's Double Sided Milled Faced Hammer	Fiberglass	36 oz.
970801146	832-26	Lineman's Claw Hammer Milled Face	Fiberglass	26 oz.

SKINNING KNIVES



Altec Cat. No.	Klein Tools Cat. No.	Knife Type	Special Features	Blade Length	Blade Material	Overall Length
970714716	44218	Cable Skinning Utility	Replaceable, Hawkbill blade	2.5"	440A Stainless Steel	8"
900015703	1570-3	Cable Skinning	Hook Blade, Notch, and Ring	3"	Steel	8"
970072338	44005	Lockback	Hawkbill blade	2.6"	AUS 8 Stainless Steel	6.75"
970330473	44006	Lockback	Hawkbill blade, Silver Aluminum	2.6"	AUS 8 Stainless Steel	6.6"

PLIERS



Altec Cat. No.	Klein Tools Cat. No.	Description	Special Features
900020009	D2000-9NE	Lineman's Pliers	Cuts ACSR, screws, nails and most hardened wire
900002009	D2000-9NETH	Lineman's Pliers, Bolt Thread-Holding	Cuts ACSR, screws, nails and most hardened wire Hinge opening holds and cleans 5/8" pole line and hardware bolts or threaded rods
900050210	D502-10	10" Pump Pliers	Quick-Adjust Rivet allows one-handed adjustment of plier jaws. 1-3/4" maximum parallel jaw opening for a range of applications

FISHTAPES



Altec Cat. No.	Klein Tools Cat. No.	Tape Material	Tape Length	End/Leader
970792288	56383	Multi-Groove Fiberglass	100'	Nylon Eyelet
970492471	56059	Fiberglass	200'	Nylon Eyelet
970796206	56351	Fiberglass	100'	Spiral Steel Leader
970492472	56341	Stainless Steel	125'	Double Loop
970492473	56340	Stainless Steel	240'	Double Loop



Discover Tilt Helmet Light

- 200 lumens | 5 - 12 hour runtime
- True-to-life™ LED technology
- Rear (red) safety LED
- Waterproof, extra-strength, fire resistant

P/N 970696292 (200 lumen version)

P/N 970696296 (100 lumen version)



Breakthrough® BT2+

- 700 lumens | 2 - 8 hour runtime
- Ultra-reach beam up to 1/2 mile
- Low profile rechargeable docking station
- Waterproof, extra-strength, fire resistant

P/N 970696316 (AA battery pack)

P/N 380-BT2P-ORR (Rechargeable kit & AA battery pack)

P/N 970696312 (low profile 400 lumen light)



Nomad® NOW Utility Truck Bucket Mounted Light System

- 3,300 lumens | 3 - 24 hour runtime
- Remote activation (key fob included)
- Includes bucket truck and magnet mounts
- Safe in high temp and wet environments

P/N 970716704





Allegiant™

- Low-profile, linear LED light bar
- FS Convergence Network, Serial light bar
- Built-in SignalMaster™ directional warning
- Class 1, CAC Title 13
- Five-year warranty

990718783	ALGT70Z-1538664592	70-Inch, Amber, Alley Lights, Front Flood, Work Lights, Flat Mount, 6 Button Controller, Clear Domes
-----------	--------------------	--



21" Allegiant™ Mini-Light Bar

- Low-profile, linear light bar
- Two-color capability
- Flat, low-profile permanent, and 4-inch riser mounting options available
- Class 1, CAC Title 13
- Five-year warranty

970797901	ALGT21Z-AMBR3BP6	21-Inch, Amber/White, Work Lights, Bed Lights, Flat Mount, Clear Domes
-----------	------------------	--

HighLighter™ LED Plus

- Low-profile; only 2.7" tall
- Highly effective 360-degree of light output
- Pattern selection using MagnetSelect™, key chain included for 454201HL models only
- (36) High-powered LEDs (454201 models), (26) high-powered LEDs (454101 models)
- Class 1
- Five-year warranty

970127407	454201HL-02	Amber LEDs, Amber Dome, Permanent Mount
970273393	454201HL-25	Amber LEDs, Clear Dome, Permanent Mount
970392453	454101HL-02	Amber LEDs, Amber Dome, Permanent Mount
990111969	454101HL-25	Amber LEDs, Clear Dome, Permanent Mount

Model 651 LED

- Low-profile beacon
- Aluminum base and polycarbonate dome
- Branch guard and Altec blackout lens
- Class 2
- Five-year warranty



068451218	420221-02	LED 651 Beacon, Class 2
-----------	-----------	-------------------------

Pro LED Beacon

- Single and dual color beacon
- (25) selectable flash patterns
- Built-in permanent/1-inch pipe mount metal base
- Class 1, CAC Title 13
- Five-year warranty



970798189	300TMP-A	Tall Amber Dome, Amber LEDs
970798192	320TPMC-AW	Tall Clear Dome, Amber/White LEDs
970798195	300SMP-A	Short Amber Dome, Amber LEDs
970798196	320SMP-AW	Short Clear Dome, Amber/White LEDs

Spire™ 100 & 200 Beacon

- Spire 100 - Single color
- Spire 200 - Single and dual color, FSLink™
- 5 dome color options; 5 base mounting options
- Class 1
- (25) selectable flash patterns
- Five-year warranty



970797902	100SD-A	Amber, Short, Die-Cast Metal/1" Pipe Mount
970798177	100SP-A	Amber, Short, Poly/1" Pipe Mount
970798179	100TD-A	Amber, Tall, Die-Cast Metal/1" Pipe Mount
970798178	100TP-A	Amber, Tall, Poly/1" Pipe Mount
970798180	220SP-AW	Amber/White, Short, Poly/1" Pipe Mount
970798183	220TP-AW	Amber/White, Tall, Poly/1" Pipe Mount
970798181	200B-Tall	Tall, Branch Guard
970798182	200B-Short	Short, Branch Guard





MicroPulse™ Ultra 3/6

- Super low-profile design offers wide range of mounting options
- Superior warning with (3), (6) and (12) high-powered LEDs
- 18 (MPS300U/MPS620U) and 23 (MPS600U) selectable flash patterns
- Class 1
- Three-year warranty

970656807	MPS600U-AA	6-LED Light Head, Amber/Amber LEDs
970656809	MPS600U-WW	6-LED Light Head, White/White LEDs
970664794	MPS300U-A	3-LED Light Head, Amber LEDs
970664795	MPS300U-W	3-LED Light Head, White LEDs
970681792	MPS620U-WA	12-LED Light Head, Dual (6) White/(6) Amber LEDs

Latitude™ SignalMaster™

- High-output Solaris® LED reflector technology
- Left, right, and center-out warning signals
- Comes equipped with SignalMaster Controller
- Class 1 and CAC Title 13 Approval
- Five-year warranty

970527156	SL6S-A	6-Head, 24.2", Amber, SignalMaster and Controller
970511212	SL8S-A	8-Head, 31.6", Amber, SignalMaster and Controller
970706581	SL8S-A-50	8-Head, 31.6", Amber, SignalMaster and Controller
970656828	SL8S-A48	8-Head, 48", Amber, SignalMaster and Controller



Mobile Camera Systems

- High-resolution, color Sony® CCD cameras
- Cameras equipped with automatic day/night sensor
- Several camera options available
- TFT-LCD color monitor
- Call for more camera options
- Three-year warranty

970157236	CAMSET56-NTSC-2	5.6" Monitor with (2) Camera Input, Standard Rear-View Camera, Cable
970329767	CAMSET70-NTSC4B	7.0" Monitor with (4) Camera Input, Standard Rear-View Camera, Cable



MicroPulse™ Wide Angle

- Utilizes (9); 180-degree light spread
- (12) flash patterns
- Single-color models available
- Synchronizes with other MicroPulse products
- Class 1
- Three-year warranty

970622645	MPSW9-W	9-LED Light Head, White
970656804	MPSW9-A	9-LED Light Head, Amber
970656806	MPSMW9-1	Chrome Bezel



4200S Perimeter Light

- Surface mount, 4-LED light head
- 12 selectable flash patterns
- Suitable for internal and external mounting options
- Three-year warranty

970798184	4200S-A	4-LED Light Head, Amber
970798185	4200S-W	4-LED Light Head, White



8200S Perimeter Light

- Surface mount, 8-LED light head
- 12 selectable flash patterns
- Suitable for internal and external mounting options
- Three-year warranty

970798186	8200S-A	8-LED Light Head, Amber
970798187	8200S-AW	8-LED Light Head, Amber/White
970798188	8200S-W	8-LED Light Head, White

Lewis Manufacturing Co.



Pulling & Suspension Grips
Ball Bearing Swivels
Jobsite Debris & Auger Tarps
Equipment & Shed Covers
3000 lbs. Capacity Bulk-Bags



TOOLS TO GET THE JOB DONE RIGHT.



Lewis Manufacturing Co.

BALL BEARING SWIVELS

Designed specifically for tension stringing to keep the conductor in the neutral position during stringing of T&D lines. Made of high-grade pre-stressed steel for long life. Pins are screwdriver removable.



STANDARD DUTY	Altec	Lewis	WL lbs.	UTS lbs.
	970205739	W-1	5,000	15,000
	970685301	W-2	5,400	16,200
	970128805	W-3	12,000	36,000
	970685304	W-4	15,000	45,000

HEAVY DUTY	Altec	Lewis	WL lbs.	UTS lbs.
	970111023	HD-00	1,500	4,500
	970111029	HD-1	9,000	27,000
	970111033	HD-2	12,000	36,000
	970111035	HD-3	21,000	63,000



GREASE ZERK

SEALED HD WITH GREASE ZERK	Altec	Lewis	WL lbs.	UTS lbs.
	970799237	HD-0-SZ	5,400	16,200
	970799239	HD-1-SZ	9,000	27,000
	970799210	HD-2-SZ	12,000	36,000
	970799240	HD-3-SZ	21,000	63,000
970799241	HD-4-SZ	30,000	90,000	

EYE-EYE BALL BEARING SWIVEL

This Sealed, Eye-Eye ball bearing swivel with a running load of 4,000 lbs. is specifically designed for rigging applications.

Altec	Lewis	WL lbs.	UTS lbs.
970708141	EE-101-4K	4,000	10,000



MAX. WL 4000 LBS.

DROP-FORGED SWING LINKS

Drop forged steel swing links are fabricated from the same high quality steel as Lewis Steel Swivels. They are used for adapting swivels to Lewis grips and/or winch lines.

Altec	Lewis	Length	Eye Size	Thickness
970653310	5118	2 3/4"	7/16"	5/16"
970653311	5119	3 3/8"	7/32"	7/16"
970653312	5120	3 13/16"	9/16"	9/16"



OVERHEAD PULLING GRIPS

tough plastic boots at eye-end to prevent abrasion between the conductor and pulling dollies. A steel thimble is added into the eye.



For special demands of overhead stringing crews, with a basket made of woven Nylon Coated Aircraft Strand for maximum abrasion resistance. It has a special

Altec	Lewis	Range	WL lbs.	UTS lbs.
970685305	OH-DW-3/4-1/2	3/4"-1/2"	1,500	4,500
970588833	OH-TW-3/8-3/8	3/8"-3/8" (3/0 - .336 MCM)	3,200	9,600
970585796	OH-TW-7/8-1"	7/8"-1" (.477 - .795 MCM)	4,100	12,300
970685306	OH-SW-1-1/4-1"	1 1/4"-1" (.795 - 1.000 MCM)	6,300	18,900



Lewis Manufacturing Co.

4th generation family owned business providing the Highest Quality American Made Products since 1936.

Lewis Manufacturing Co.

SWIVEL EYE GRIPS – SEG

The SEG Series has a hardened steel rotating eyes. These eyes are durable, compact, and streamlined and will thread through blocks and sheaves without binding. **NOTE:** The rotating eye swivel is Not a Ball Bearing Swivel and will not turn while under tension. It will turn to relieve pulling torque when the pulling tension is released. If a continual swivel movement is needed, a ball bearing swivel should be used.

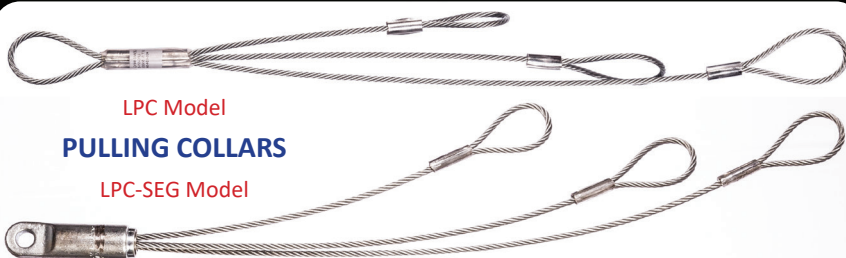


Altec	Lewis	Range	WL lbs.	UTS lbs.
900050483	SEG-0	¾"-½"	1,200	2,400
900050484	SEG-1	½"-1"	3,500	7,000
900050485	SEG-2	1"-1½"	9,600	19,000
970708143	SEG-3	1½"-2"	11,200	22,400
970708148	SEG-4	2"-2½"	16,300	32,600
970704618	SEG-5	2½"-3"	16,700	33,400

Altec	Lewis	Range	WL lbs.	UTS lbs.
970704619	SEG-6	3"-3½"	16,700	33,400
970708150	SEG-7	3½"-4"	16,570	33,400
970708151	SEG-8	4"-4½"	23,300	46,600
970708152	SEG-9	4½"-5"	23,300	46,600
970708153	SEG-10	5"-5½"	23,300	46,600

LEWIS PULLING COLLARS

The staggering feature of the Lewis Pulling Collars reduce the stress on the conductors and maintaining their integrity. **LPC Models** and **LPC-SEG Models** are available with 1 to 4 legs. Models are available with up to **14,000 lbs.** combined UTS.



X, XS, X-HDFE MULTI-PURPOSE GRIPS

The entire X Series model grips can be used for overhead or underground pulls. They incorporate a single wire bail which, when put under pressure, conforms to even the tightest clearances. The X and X Heavy-Duty feature color-coded metal shoulders beneath the bail. These shoulders allow the grip to be pulled through the most abrasive conduit or other rough environments, and still be used time after time.



Lewis Manufacturing Co.

4th generation family owned business
providing the Highest Quality
American Made Products since 1936.



TOOLS TO GET THE JOB DONE RIGHT.

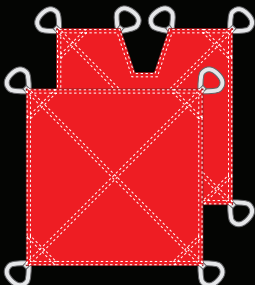


Lewis Manufacturing Co.

ROWDY'S DIRTBALL™ TARPS

This jobsite debris tarp is great for keeping the site cleaner, saving time, and making customers happier. The tarps are made of Heavy-Duty, Rubberized Canvas and have lifting handles. Great time saver for backfilling or taking the debris away. The V-notch model (add V to the end of part no.) gets you even closer to your work.

MAX. WL 1000 LBS.

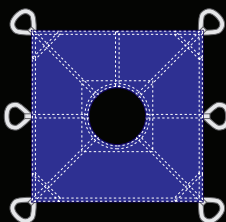


Altec	Lewis	Size	Canvas
970588839	RDB-6x6-18	6' x 6'	18 oz.
970588840	RDB-7x7-18	7' x 7'	18 oz.
970588841	RDB-8x8-18	8' x 8'	18 oz.
970588845	RDB-6x6-22	6' x 6'	22 oz.
970588846	RDB-7x7-22	7' x 7'	22 oz.
970588847	RDB-8x8-22	8' x 8'	22 oz.

ROWDY'S AUGER TARPS

The Auger Tarp is similar to Rowdy's DirtBall but has a center opening. One side of the tarp has an overlapping slit for installing or removing from around a pole for a cleaner jobsite while digging & installing a pole. The side slit is secured using Heavy-Duty Quick Release buckles & hook-loop closures. Auger tarp has six handles for secure and flexible lifting & moving.

MAX. WL 1000 LBS.



Altec	Lewis	Size-Hole	Canvas
970588853	RDB-A18-6x6-22	6'x6'-18"	22 oz.
970588854	RDB-A24-6x6-22	6'x6'-24"	22 oz.
970588857	RDB-A24-7x7-22	7'x7'-24"	22 oz.
970588858	RDB-A30-7x7-22	7'x7'-30"	22 oz.
970588862	RDB-A30-8x8-22	8'x8'-30"	22 oz.
970588863	RDB-A36-8x8-22	8'x8'-36"	22 oz.

LEWIS BULK-BAG™

Lewis Bulk-Bag™ is ideal for securely storing / organizing your equipment & heavy-duty debris removal. Standard size bulk bag Provides 47 cubic feet of storage. Made of Heavy-Duty 22 oz. Vinyl-Coated Nylon. 24" Long, 4" Wide High-Strength Nylon Webbing for Lifting and Support Straps. 2" Top Rim High-Strength Nylon Web Reinforcement. Double-Layered Bottom for Extra Strength.

Altec	Lewis	Size	Vol.	WL lbs.	Canvas
970594905	90-2031	44" x 44" x 42"	47 ft³	3,000	22 oz.
970708154	90-2034	32" x 32" x 32"	19 ft³	3,000	22 oz.

NOT FOR USE WITH LIQUIDS



MAX. WL 1000 LBS.

SPIDER TARPS

A jobsite debris tarp designed for heavier loads than our standard job debris tarps. The extra re-inforced multi-strap webbing on the "Down Side" of the tarp give the tarp a much higher work load of 2,975 lbs. as compare to 1,000 lbs. work load of our other debris tarps.

MAX. WL 2,975 LBS.



HEAVY-DUTY

Essential Solutions for Workplace Safety

Justrite Safety Group is a growing family of leading industrial safety companies. Together we protect workers, workplaces and the environment with a comprehensive range of industrial safety solutions—from the storage, containment and clean-up of hazardous materials to emergency showers, industrial matting, and motion safety.



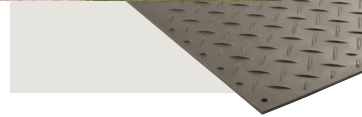
Checkers™ Ground Protection

- P/N 970762361 LibertyMAT® Ground Protection Mat, black, 4 x 8 ft ▲*
- P/N 900021810 AlturaMATS® Ground Protection Mat, black, 4 x 8 ft ▲*
- P/N 970108329 Outrigger Pad, 24" x 24" x 2", 62,000 lb load, black



Checkers™ Vehicle & Motion Safety

- P/N 893856050 General-Purpose Wheel Chock, 27"-32" tire, 30,000 lb load ▲†
- P/N 970776512 Yellow Jacket® Heavy-Duty Cable Protector, 5-Channel ▲‡
- P/N 970323163 Linebacker® Heavy-Duty Cable Protector, 3-Channel ▲‡



Justrite® Safety Cans for flammables

- P/N 970706779 Type I Safety Can with funnel, 2 gallon, red
- P/N 900700003 Type I Safety Can with trigger handle, 1 gallon, red
- P/N 970650548 Type I Safety Can, 1 gallon, red
- P/N 970353163 Type II AccuFlow™ D.O.T. Safety Can, 2.5 gallon, 5/8" metal hose, red



*▲ **WARNING:** This product can expose you to chemicals including lead, carbon black, chromium, nickel compounds, and sulfur dioxide, which are known to the State of California to cause cancer and birth defects or other reproductive harm. For more information go to www.P65Warnings.ca.gov.

†▲ **WARNING:** This product can expose you to chemicals including acrylonitrile and styrene, which is known to the State of California to cause cancer and birth defects or other reproductive harm. For more information go to www.P65Warnings.ca.gov.

‡▲ **WARNING:** This product can expose you to chemicals including carbon black, titanium dioxide, formaldehyde, and benzyl butyl phthalate, which are known to the State of California to cause cancer and birth defects or other reproductive harm. For more information go to www.P65Warnings.ca.gov.



**Huskie
TOOLS**

**POLE PULLING & MATERIAL
HANDLING EQUIPMENT**
CREATED BY LINEMEN FOR LINEMEN

HYDRAULIC UTILITY POLE PULLER FROM HUSKIE TOOLS



TiiGER

The TiiGER Pole Puller removes utility poles safely and efficiently. At 57 lbs. it's the lightest and safest pole puller on the market.



- Reduces boom damage & maintenance costs
- Alloy chain, swivel, & back plate provide max. grip
- Safely grip poles as low as 14" from ground level
- Easily disassembled for transport and storage
- Over 50,000 lbs. lifting capacity at 2,800 PSI

Altec	TiiGER	DESCRIPTION
970074792	4001D	Pole Puller
970184541	HA0040	Pole Puller Pad (Optional)
970011910	4040B	Back Plate (Replacement)

METAL POLE CLAMSHELL ATTACHMENT



TiiGER Clamshell Attachments provides secure grip on metal poles and prevent surface damage. Available in three sizes, they can accommodate metal poles up to 20" diameter.

Altec	TiiGER	POLE DIAMETER
970684733	SP1000	8' to 12'
970684734	SP1100	12" to 16"
970684735	SP1200	16" to 20"

MATERIAL HANDLING EQUIPMENT

The Load-N-Go



Portable Reel Rack System

- Collapsible Design for easy Storage
- Max Real Size 41"W x 61" Ø
- 2,000 lbs. Load Capacity

Altec #	TiiGER #
970412702	LNG2012

Pole Mount Transformer Dolly



Safe Functional Transformer Carrier

- Maintains Vertical Positioning of Transformer
- 36" Working Height
- 900 lbs. Load Capacity
- Fits Through 36" Gate.

Altec #	TiiGER #
970244692	HA0075

Two-Wheel Pole Dolly



Safe & Effective Pole Handling System

- 180° Steering
- 2,200 lbs. Load Capacity
- Total Weight 157 lbs.

Altec #	TiiGER #
970034373	1025A



877.GO ALTEC | CONNECT.ALTEC.COM/STORE





**Huskie
TOOLS**

NOT ALL TOOLS ARE CREATED EQUAL.

UTILITY-GRADE COMPRESSION TOOLS

OVERHEAD, UNDERGROUND, SUBSTATION,
TRANSMISSION AND DISTRIBUTION

BUILT LINEMAN TOUGH

- The industry's most durable dependable compression tools
- Tested to 75kV for use in live-line applications
- Ergonomically designed and balanced
- Genuine Makita LXT® 18V Li-Ion Batteries

SERIES 7M
PRO LINE

6-TON COMPRESSION TOOLS



- Lightweight ergonomic design allows one-hand operation
- Accepts all "W", "X", & "O" type industry standard dies sets
- Includes: (2) 18V/5.0Ah Li-Ion Batteries, 120VAC Charger and Tool Bag

P/N 970786307 | REC-MK758U Pistol-Grip

Lugs & Splices to 350 MCM Al, to 500 MCM Cu, and H-Taps to 4/0

P/N 970278232 | SL-MK7NDBG Inline

Lugs & Splices to 350 MCM Al, to 500 MCM Cu, and H-Taps to 4/0

Includes SLBG-JAW - Other jaws available ordered separately.

OPTIONAL JAWS



Huskie Tools P/N	SLND3-JAW	SLO-JAW	SLK-JAW	SL-CHACSR	SL-CHCUAL
Attec P/N	970709223	970324975	970669003	970691146	970442175

6.2-TON DIELESS COMPRESSION TOOL

- Integrated crimping nibs eliminate need for multiple die sets
- Crimps Anderson and other connectors meeting ANSI C119.4
- Includes: (2) 18V/5.0Ah Li-Ion Batteries, 120VAC Charger and Tool Bag

P/N 970786316 | REC-MK7750 Pistol-Grip

P/N 970786384 | SL-MK7750 Inline

Lugs & Splices up to 750 MCM Al & 500 MCM Cu



12-TON COMPRESSION TOOL

- Optimized hydraulics offer 20% faster advance and 30% faster retraction speeds over previous generation tools
- Accepts all "U" type industry standard dies sets
- Includes: (2) 18V/5.0Ah Li-Ion Batteries, 120VAC Charger and Tool Bag

P/N 970786295 | REC-MK7510 Pistol-Grip

Lugs & Splices up to 750 MCM Al/Cu

Huskie Tools is not affiliated, authorized, or endorsed by Makita Corporation. Makita listed batteries and chargers are being re-sold by Huskie Tools. Makita® and LXT® are registered trademarks of Makita Corporation.



TOOLS TO GET THE JOB DONE RIGHT.





**Huskie
TOOLS**

NOT ALL TOOLS ARE CREATED EQUAL.

UTILITY-GRADE CUTTING TOOLS

OVERHEAD, UNDERGROUND, SUBSTATION,
TRANSMISSION AND DISTRIBUTION

BUILT LINEMAN TOUGH

- The industry's most durable dependable cutting tools
- Tested to 75kV for use in live-line applications
- Ergonomically designed and balanced
- Genuine Makita LXT® 18V Li-Ion Batteries

SERIES 7M
PRO LINE



GEAR-DRIVE CABLE CUTTERS

- Powerful proven Gear-Drive Design
- Wide-range 2-1/8" Jaw Opening
- Includes: (2) 18V/5.0Ah Li-Ion Batteries, 120VAC Charger and Tool Bag

P/N 970786304 | REC-MK754M

Cuts ACSR to 1590 MCM, Al to 1500 MCM & Cu to 750 MCM

P/N 970786301 | REC-MK754ACM

Cuts Al to 1500 MCM & Cu to 1000 MCM



6-TON INLINE CABLE CUTTERS

- Lightweight ergonomic design allows one-hand operation
- 180° rotating head for ease-of-use and maneuverability
- Includes: (1) 18V/2.0Ah Li-Ion Batteries, 120VAC Charger and Tool Bag

P/N 970786220 | ECO-MK7336B-1

Cuts ACSR to 336 MCM, Al to 1" & Cu to 500 MCM

P/N 970799537 | ECO-MK7500-1

Cuts Al to 1" & Cu to 500 MCM



8-TON CABLE CUTTERS

- Powerful 8-Ton cutting force easily handles hard metals
- 180° rotating head for ease-of-use and maneuverability
- Includes: (2) 18V/5.0Ah Li-Ion Batteries, 120VAC Charger and Tool Bag

P/N 970786414 | SL-MKS740L Inline

Cuts ACSR to 1590 MCM, Al/Cu to 1.5", Std. Guy Wire to 5/8",
Wire Rope to 3/4", Rebar & Rod to 5/8"
(Do Not cut EHS or Case-Hardened Steel Rod)

P/N 970786334 | REC-MKS724H Pistol-Grip

Cuts ACSR to 477 MCM, EHS to 7/16", Std. Guy Wire to 5/8",
Wire Rope to 7/8", Rebar & Rod to 5/8"

Huskie Tools is not affiliated, authorized, or endorsed by Makita Corporation. Makita listed batteries and chargers are being re-sold by Huskie Tools. Makita® and LXT® are registered trademarks of Makita Corporation.



877.GO.ALTEC | CONNECT.ALTEC.COM/STORE

**Altec
Supply**



CHOOSE THE BEST BUDDY® RODDER FOR YOUR JOB

BUDDY RODDERS FOR PULLING ELECTRICAL AND TELECOMMUNICATIONS CABLES IN CONDUIT

- Non-conductive fiberglass rod core provides exceptional bending strength
- Orange polymer jacket protects against abrasion and reduces friction
- Marked in 5 foot increments, round flexible rod slides easily over wires in occupied conduit
- Accessories attach to rod for greater versatility and easier fishing



1/4" DIA.

EASY BUDDY®

Length	Altec #	Jameson #
300'	970257150	6-14-300M
400'	970256894	6-14-400M
500'	970748345	6-14-500M



3/8" DIA.

GOOD BUDDY® II

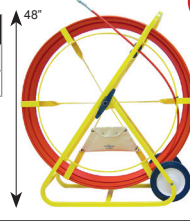
Length	Altec #	Jameson #
400'	970748223	11A-25-400M
500'	900011255	11A-25-500M
600'	970192885	11A-25-600M



3/8" DIA.

GOOD BUDDY® III

Length	Altec #	Jameson #
300'	970747392	9A-25-300M
400'	970203577	9A-25-400M



1/2" DIA.

BIG BUDDY®

Length	Altec #	Jameson #
400'	970492515	11-38-400M
500'	970748221	11-38-500M
600'	970490310	11-38-600M
800'	970748222	11-38-800M
1,000'	970246842	11-38-1000M

DUCT HUNTERS FOR LOCATING UNDERGROUND UTILITY LINES

- One person can do the job with minimal or no excavation.
- Trace ductile iron, plastic, tile or concrete pipe up to 10' depth
- Attach sonde, roller guide or pulling eye to rod end ferrule
- Works with industry-standard locator sets



CHOOSE THE BEST DUCT HUNTER™ FOR YOUR JOB



1/4" DIA.

DUCT HUNTER™

Length	Altec #	Jameson #
300'	970748228	16-14-300M
400'	970492516	16-14-400M
500'	970748229	16-14-500M
600'	970748230	16-14-600M



5/16" DIA.

DUCT HUNTER™

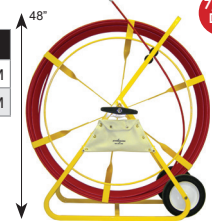
Length	Altec #	Jameson #
500'	970492517	12A-516-500M
600'	970784040	12A-516-600M
700'	970492518	12A-516-700M
800'	970784041	12A-516-800M
1200'	970492519	12A-516-1200M



5/16" DIA.

DUCT HUNTER™

Length	Altec #	Jameson #
300'	970784038	12-516-300M
400'	970784039	12-516-400M



7/16" DIA.

DUCT HUNTER™

Length	Altec #	Jameson #
400'	970717240	13-716-400M
500'	970767628	13-716-500M
600'	970798566	13-716-600M
800'	970204510	13-716-800M
1000'	970204511	13-716-1000M



Accessories and Many More Models and Lengths Available

TOOLS TO GET THE JOB DONE RIGHT.





INSULATED HAND TOOLS

- Meets IEC 60900 Cat. C and ASTM F1505
- 100% Inspected – Tested to 10,000V, Rated to 1,000V
- Engineered Nylon 11 Injection molding provides maximum personal protection
- Cut, abrasion and impact resistant



9 pc. Basic Electrician's Kit P/N 970748267 | JT-KT-00001

Incl: 9-1/2" Linemen's, 8" Long Nose, 7" Side-Cutting Pliers; 3/16"x3", 3/16"x6", 1/4"x6" Slotted Screwdrivers; #1x3", #2x4" Phillips Screwdrivers; Wire Stripper and 8-pocket Tool Roll



9 pc. Screwdriver Set P/N 970748272 | JT-KT-00010

Incl: 3/16"x3", 3/16"x6", 3/16"x8" Slotted Screwdrivers; 1/4"x4", 5/16"x6", 3/8"x10" Slotted Eng. Screwdrivers; #1x3", #2x4", #3x6" Phillips Screwdrivers and 8-pocket Tool Roll



13 pc. Electrician's Tool Kit P/N 970492520 | JT-KT-00004

Incl: 9-1/2" Linemen's, 8" Long Nose, 7" Side-Cutting, 10" Pump Pliers; 9" Cable Cutter; 1/8"x3", 3/16"x4", 1/4"x6" Slotted Screwdrivers; #2x4" Phillips Screwdrivers; 3/16", 1/4", 5/16" Nut Drivers; Cable Jointers Knife and Tool Pouch



12 pc. General Utility Tool Kit P/N 970748271 | JT-KT-00008

Incl: 9-1/2" Linemen's, 8" Long Nose, 7-1/2" Side-Cutting, 10" Pump Pliers; 9" Cable Cutter; 1/4"x4", 5/16"x6", 3/8"x10" Slotted Screwdrivers; #1x3", #2x4", #3x6" Phillips Screwdrivers; Cable Jointers Knife and Tool Case



29 pc. Maintenance Tool Kit P/N 970748275 | JT-KT-00029

Incl: 8" Combination, 8" Long Nose, 6-1/4" Side-Cutting Pliers, 3/8"-3/4" Open-End Wrenches; 3/8"-3/4" Sockets, 3/16" & 1/4" Hex Key Socket, 5" & 10" Extension, 1/2" Drive Ratchet, 1/8"x3", 5/32" x3", 3/16"x6", 5/16"x6" Slotted Screwdrivers; #1x3", #2x4" Phillips Screwdrivers, Cable Jointers Knife and Tool Case



Many Additional Kits and Individual Tools Also Available

877.GO ALTEC | CONNECT.ALTEC.COM/STORE



ONE PERSON. NO TRAILER.



Making It Easier To Transport & Install Cable!

Designed by professional cable installers, J-Lift allows one person to load and unload cable reels quickly, safely and easily.

Directly mounts to service body pintle plate or easily slides into square hitch receiver with customer-supplied pintle hook mounting plate. The 1,000 lbs. lifting capacity* easily handles:

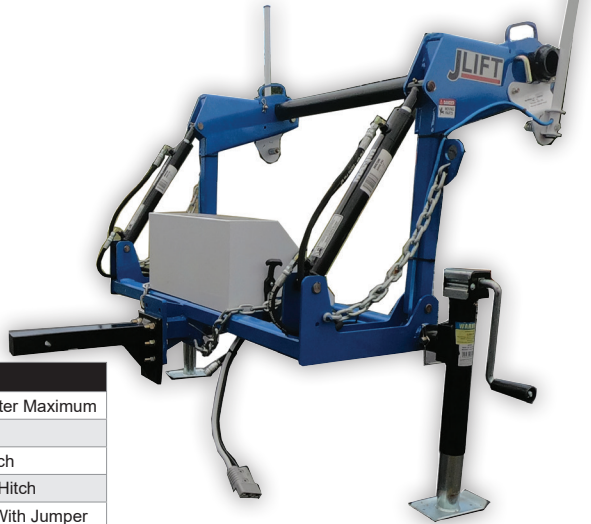
Cable Conduit	Fiber Geothermal	Strand Fence	Wire And More!
---------------	------------------	--------------	-----------------------

Industry professionals have found the J-Lift makes their job easier **PLUS** saves time & money compared to using a trailer!

- Easy To Park & Back Up
- Haul More Reels
- Parking Deck & Drive-Thru Accessible
- Lower Insurance Costs
- Reduced Fuel Usage
- CDL Not Required
- Use On Multiple Trucks

- **One Person Operation**
- **Eliminates Need For Trailer**
- **1,000 Lbs. Lifting Capacity***

* Depending on vehicle tongue weight and hitch class rating



J-Lift Specifications	
Altec / Jameson	970492521 / MTK-40
Dimensions	45" x 28" x 30"
Total Weight	293 Lbs.
Weight - Wiring	18 Lbs.
Power Source	12-Volt DC
Finish	Powder Coat
Hydraulic Pump	Dual Action with Corded Remote Control
Hydraulic Hoses	1/4" SAE, 5800 PSI
Cylinders	3000 PSI
Center Arbor	2.5" Diameter

Operating Specifications	
Maximum Reel Capacity	40" Wide x 48" Diameter Maximum
Maximum Lifting Capacity	1,000 Lbs.*
Hitch Required	Minimum Class IV Hitch
Hitch Recommended	Pintle Plate / Class V Hitch
Wiring Included	20', 4 AWG Harness With Jumper Clamps & Ring Terminal Options



LINE CLEARANCE & TREE TRIMMING TOOLS

THE ORIGINAL FIBERGLASS POLE



SINCE 1956 Jameson introduced the first fiberglass lay-up sticks in 1956 to meet the needs of telecommunication linemen. Today, Jameson poles are available in a variety of configurations with tools and accessories to serve linemen, professional arborists and landscapers.

Altec	Jameson	Description
900060506	JE-6F	6' JE Foam Core Base Pole*
900060501	JE-6	6' JE Foam Core Extension Pole
970748258	JE-6PKG-2	1.25" Pruner w/Adapter & Rope, Saw Head w/13" Tri-Cut Saw Blade, 13" Tri-Cut Hand Saw, Limb Raiser, 6' JE Extension Pole, and 6' JE Base Pole
900060006	FG-6F	6' FG Hollow Core Base Pole*
900099413	FG-6	6' FG Hollow Core Extension Pole
970073100	FG-6-3W	Two 6' FG Extension Poles, One 3' FG Extension Pole, One 6' FG Base Pole, and Limb Raiser
970748254	FG-6PKG-7	1.75" Dbl. Pulley Pruner w/Adapter & Rope, Saw Head w/16" Tri-Cut Saw Blade, 6' FG Extension Pole, and 6' FG Base Pole

*JAMESON RECOMMENDS STARTING WITH A BASE POLE



1.25" Pruner



1.75" Double Pulley Pruner



Saw Head



Hand Saw

Original Jameson Fiberglass Poles



Base Pole



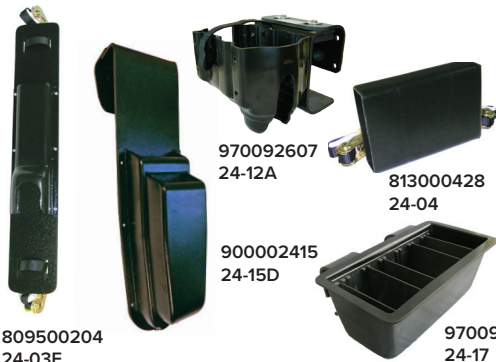
Extension Pole

(JE Foam Core Poles Shown)



BUCKET & BOOM TOOL HOLDERS

Jameson heavy-duty bucket mount tool holders offer safe, convenient tool storage wherever the job takes you.



809500204
24-03F

970092607
24-12A

813000428
24-04

900002415
24-15D

970097916
24-17

Altec	Jameson	Description
809500204	24-03F	Long Reach Chainsaw Holder (Fits Fairmont Style Chainsaw)
813000428	24-04	Hydraulic Pruner Holder
970092607	24-12A	Impact Tool Holder
900002415	24-15D	Double Pocket Tool Holder
970097916	24-17	Tool Tray

Additional Tree Trimming & Tool Holder Configurations Available

877.GO ALTEC | CONNECT.ALTEC.COM/STORE





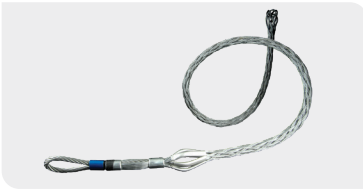
CABLE INSTALLATION AND SUPPORT PRODUCTS

SAFE, DEPENDABLE AND EASY TO USE

HEAVY DUTY CABLE GRIPS

Choose from a comprehensive range of cable and conductor pulling products, each designed and engineered to deliver reliable performance for the installation of cables or pipes through ducts, conduits and trenches.

A TYPE – HIGH STRENGTH CABLE GRIP

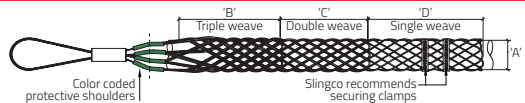


- Made for synthetic rope pulling
- Strongest grip we produce for overhead line pulls
- Use a Slingco Feeding Tube for easier rope insertion



Altec	Slingco	Color Code	Rope Diameter Range		Conductor Diameter Range		Overall length		Lattice Length		Approx. Break Load	
			in	mm	in	mm	in	mm	in	mm	lb	kg
970735484	ZCS1799	Black	0.25 - 0.65	6-16	0.19 - 0.40	5-10	38	965	28	710	7,000	3,180
970699427	ZCS3020	Purple	0.30 - 0.40	7.5-10	0.25 - 0.40	6-10	42	1,067	30	760	10,000	4,530
970735485	ZCS1800	Dark Green	0.50 - 0.90	13-23	0.38 - 0.63	9.7-16	51	1,300	37	940	14,000	6,360
970750375	ZCS3522	Grey	0.44 - 0.90	11-23	0.44 - 0.63	11-16	110	2,800	97	2,470	20,000	9,072
970744875	ZCS1801	Red	0.75 - 1.10	19-28	0.63 - 0.88	16-22	74	1,880	58	1,473	20,000	9,072
970752295	ZCS1802	Blue	1.00 - 1.50	25-38	0.88 - 1.13	22-29	80	2,032	61	1,549	30,700	13,955
970740661	ZCS1803	Yellow	1.25 - 1.70	32-43	1.13 - 1.38	29-35	112	2,845	90	2,299	47,000	21,360
970740429	ZCS1804	Aluminum	1.50 - 2.10	38-53	1.38 - 1.90	35-50	119	3,020	92	2,336	67,000	30,455

MU TYPE – HIGH STRENGTH CABLE GRIP



- Made for heavy loads and stringing overhead transmission lines
- Flexible eye connects with Slingco line pulling swivels

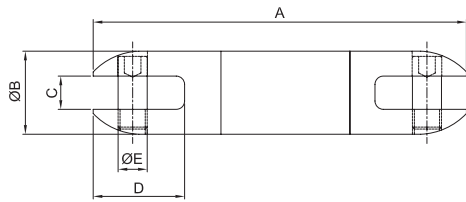
NOTE: Grips should always be used with swivels to remove torsion.

Altec	Slingco	Color Code	Range		Lattice Length		Approx. Break Load	
			in	mm	in	mm	lb	kg
970740462	ZCS1710	Dark Green	0.25 - 0.50	6-12	31	787	7,000	3,170
970740439	ZCS1711	Brown	0.50 - 0.75	12-19	45	1,143	10,500	4,760
970740464	ZCS1712	Light Blue	0.75 - 1.00	19-25	43	1,092	14,100	6,395
970738777	ZCS1713	Gold	1.00 - 1.25	25-32	65	1,651	25,000	11,340
970740236	ZCS1714	Black	1.25 - 1.50	32-38	59	1,499	31,000	14,065
970778176	ZCS1715	Red	1.50 - 1.75	38-44	82	2,083	31,000	14,065
970783151	ZCS1716	Dark Blue	1.75 - 2.25	44-57	82	2,083	49,000	22,230
970799415	ZCS1750	Yellow	2.00 - 2.50	50-63	72	1,829	49,000	22,230
970767430	ZCS1751	Orange	2.50 - 3.00	63-76	72	1,829	49,000	22,230
970799416	ZCS1752	Aluminum	3.00 - 3.50	76-89	74	1,880	49,000	22,230
970767431	ZCS1753	Light Green	3.50 - 4.00	89-102	76	1,930	49,000	22,230



LINE PULLING SWIVELS

Choose from a comprehensive range of cable and conductor pulling products, each designed and engineered to deliver reliable performance for the installation of cables or pipes through ducts, conduits and trenches.



BULL NOSE - LINE PULLING SWIVEL

Altec	Slingco	Safe Working Load at 3:1 lb (kg)	A in (mm)	Ø B in (mm)	C in (mm)	D in (mm)	Ø E in (mm)
970768395	ZSW2649	4,000 (1,815)	4 3/4 (121)	1 1/4 (32)	19/32 (15)	1 3/16 (30)	3/8 (10)
970740433	ZSW2929	8,000 (3,630)	5 3/8 (136)	1 1/2 (38)	5/8 (16)	1 3/8 (35)	7/16 (11)
970752294	ZSW6122	10,000 (4,530)	7 (178)	1 7/8 (48)	3/4 (19)	1 3/4 (44)	5/8 (16)
970747999	ZSW6123	16,000 (7,142)	10 5/8 (258)	2 7/16 (62)	1 (25)	2 11/16 (68)	7/8 (22)
970799412	ZSW2857	30,000 (13,610)	11 1/8 (283)	2 1/2 (63)	1 (25)	2 3/4 (70)	7/8 (22)

- Made for underground and overhead pulling applications



ROUNDED END - LINE PULLING SWIVEL

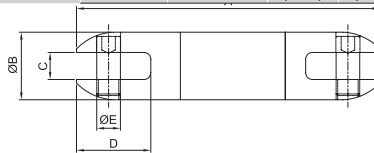
Altec	Slingco	Safe Working Load at 3:1 lb (kg)	A in (mm)	Ø B in (mm)	C in (mm)	D in (mm)	Ø E in (mm)
970742486	ZSW2091	2,250 (1,015)	3 3/8 (86)	7/8 (22)	3/4 (10)	7/8 (22)	5/16 (8)
970750238	ZSW2092	3,500 (1,590)	4 (99)	1 (25)	7/16 (11)	11/16 (26)	3/8 (10)
970735483	ZSW2093	5,000 (2,240)	4 19/64 (126)	1 1/2 (32)	9/16 (14)	1 1/4 (32)	3/8 (10)
970744783	ZSW2094	7,000 (3,170)	5 3/16 (132)	1 3/8 (35)	9/16 (14)	1 13/32 (36)	1/2 (12.5)
970739781	ZSW2096	10,000 (4,530)	6 3/16 (157)	1 5/8 (41)	45/64 (18)	1 3/4 (45)	13/32 (16.5)
970747477	ZSW2097	15,000 (6,730)	7 5/16 (186)	2 3/32 (53)	25/32 (20)	2 1/8 (54)	23/32 (18)

- Made for stringing high tension wires for electrical transmission

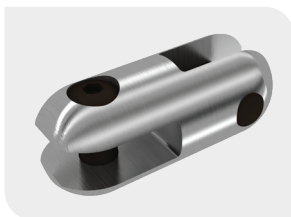


DIRECTIONAL DRILLING SWIVEL

Altec	Slingco	Safe Working Load at 3:1 lb (kN)	A in (mm)	Ø B in (mm)	C in (mm)	D in (mm)	Ø E in (mm)	F in (mm)
970796504	ZSW11133	8,500 (37.8)	7.24 (183.8)	1.62 (41.2)	0.63 (16.0)	1.60 (40.6)	0.53 (13.4)	0.55 (13.9)
970796506	ZSW11134	10,000 (44.4)	8.32 (211.3)	2.00 (50.8)	0.75 (19.0)	1.77 (45.0)	0.59 (14.9)	0.75 (19.0)



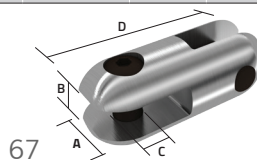
- Designed to the highest specifications for underground pulling and drilling applications



90° CONNECTORS

Altec	Slingco	Safe Working Load lb (kg)	A in (mm)	B in (mm)	C in (mm)	D in (mm)	Weight lb (kg)
970744876	ZSW6554	2,500 (1,134)	7/8 (22)	3/4 (9.6)	5/16 (8)	2 1/8 (54.0)	0.17 (0.08)
970742306	ZSW6555	5,000 (2,240)	1 1/4 (31.8)	17/32 (15)	13/32 (10)	2 1/8 (54.0)	0.46 (0.21)
970783022	ZSW6556	9,000 (4,030)	1 1/2 (38.1)	19/32 (15)	1/2 (12.5)	3 3/8 (73.0)	0.73 (0.33)
970783023	ZSW6557	15,000 (6,800)	2 (50.8)	25/32 (20)	11/16 (18.0)	4 9/16 (116)	2.00 (0.91)

- Safely connect rope without fear of fraying or damage



RUBBER BLANKET CLAMP



- Constructed of ultraviolet stabilized fiberglass reinforced polymer
- Holes have been placed in the handles to enable attachment of warnings, tags, and/or flags

Altec	Slingco	Length (in)	Weight (oz)	Jaw Opening (in)
970799361	ZPE10962	9.5"	5	5"

MECHANICAL CRIMPING TOOLS



- "D3" groove allows "W" style die inserts for installing taps, splices, and terminal connectors
- Contains ergonomic handles for comfortable use and maximum leverage
- Slingco W-Type and 'Kearney' Type dies available

Altec	Slingco	Tool Type	Crimping Force	Length (in)	Weight (lb)	Die Style
970777105	TCR7002	O Nose Die & D3 Seat	9,000 lbs	25 ³ / ₄ "	7	Accepts "W" Style Dies
970777107	TCR7004	BG Nose Die & D3 Seat	9,000 lbs	25 ³ / ₄ "	7	Accepts "W" Style Dies
970794904	TCR08735	5/8" Nose Die & Kearney Seat (accepts 'Kearney' type)	9,000 lbs	25 ³ / ₄ "	7	Accepts "Kearney" Type Dies

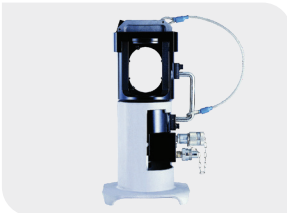
35KV JUMPER CLAMP



- Lightweight and impact resistant
- Jaw of the Slingco Jumper Clamp and floating ring contact is made from a copper-based alloy
- Inspection of the cable, ferrule, and clamp is made simple and easy

Altec	Slingco	Main Line Range	Max Continuous Amps	Threading	Length	Weight
970777105	TCR7002	954 MCM (1.25" - .162")	400	5/8" - 11 threads per inch	11.5" (292mm)	2.5 lbs (1.15 kg)

HYDRAULIC CRIMPING TOOLS



- Works great with Slingco Die Sets for 60 ton and 100 ton
- Comes with steel carrying case
- Includes ground stand
- Accepts Burndy L & Alcoa 6000 Series dies

Altec	Slingco	Crimping Force	Operating Pressure	Action	Tool Weight	Oil Required
970765517	TCR7003	60 Tons	10,000 psi (700 bar)	Single-Action	47lb	308 cc
970799363	TCR7018	60 Tons	10,000 psi (700 bar)	Double-Action	51 lb	314 cc
970799364	TCR08490	100 Tons	10,000 psi (700 bar)	Single-Action	78 lb	422 cc

HAND LINE TOOLS

Slingco's Hand Line Tools are safe and reliable tools that linemen can count on while on the job.

3" HAND LINE BLOCK



Altec	Slingco	Working Load Limit (lb)
970785298	ZAB8725	1,000

DOUBLE LOCKING SNAP HOOK



Altec	Slingco	Working Load Limit (lb)
970783149	HMI8556	5,000

HAND LINE HOOK



Altec	Slingco	Working Load Limit (lb)
970785299	HMI6502	600

REEL LIFTERS



- Counterweighted bottom arm for easy insertion in reel
- Makes handling large cable reels quick and easy, on-site or in warehouses

Altec	Slingco	Arbor Hole Min. (in)	Arbor Hole Max. (in)	Capacity (lb)	Weight (lb)	Length (in)
970754156	ZLD08729	2	4	3,000	6.50	16.125
970754157	ZLD09186	3	6	5,000	14.50	21.125
970798570	ZLD10807	3	6	12,000	32.33	30.53

ULTRA-FLEX NON-METALLIC PULLING GRIP



- Lightweight yet strong
- Made of non-metallic aramid fiber

Altec	Slingco	Range (in)	Color Code	Approx. Break Load (lb)
970799367	ZCS09336	0.63 - 0.75	Yellow	5,000
970799368	ZCS09337	0.75 - 1.0	Red	6,000
970799370	ZCS09338	1.0 - 1.25	Blue	6,000
970799371	ZCS09339	1.25 - 1.50	White	6,000

DIRT TARPS



- Heavy-duty webbing and lifting loops
- Double stitched for reinforcement and durability



Altec	Slingco	Range (ft)	Color Code	Approx. Break Load (lb)
970799372	ZLD10015	10' x 10'	Yellow	5,000
970798423	ZLD10016	8' x 8'	Red	5,000
970799373	ZLD10793	7' x 7'	Blue	3,000
970799374	ZLD10792	6' x 6'	White	3,000



877.GO ALTEC | CONNECT.ALTEC.COM/STORE





AIRCRAFT DYNAMICS

Home of the Robotools™ Robopak® Robolights®

ROBO



TRIPLEX ROBOREEL

- 8 adjustable arms
- Holds coils up to 10-1/4" Wide
- Accepts coil
Outside diameter 26" - 32"
Inside diameter 14" - 20"
- Dimensions: 34-1/2" H x 14" D x 33-1/2" W
- Weight: 58 lbs.

PROUDLY MADE IN THE



P/N 9701-02567 5478

REELS

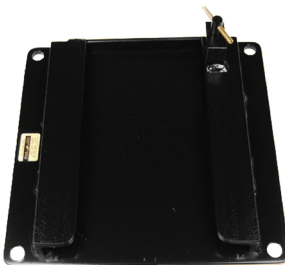
GUY WIRE ROBOREEL

- 4 adjustable arms
- Holds guy wire with 1/2" diameters
- Accepts coil
Outside diameter 22" - 31"
- Holds coils upto 4.75" wide
- Dimensions: 33 3/4" H x 9 1/4" D x 32 1/4" W
- Weight: 41 lbs.
- Wire can be pulled from either direction

P/N 9701-04847 5276



ROBOREEL QUICK CHANGE PLATE



- Great space organizer.
- Ideal accessory for those who want a quick means to remove or remount your RoboReel

P/N 9000-50214 5074

** Not compatible with horizontal reels





AIRCRAFT DYNAMICS

Home of the Robotools™ Robopak® Robolights®

#1 Pole Transportation Safety System. Small and easy to store, yet extremely rugged with LED technology rated for 100,000 hours of heavy duty operation. Long range visibility of 5+ miles with four alternative flash patterns: Comet, Single, Steady Burn and Flare Flicker. Light modules are encapsulated for vibration and moisture resistance with front angled reflectors (front and side viewing). Easy to attach using a heavy duty strap that attaches to all poles. Additional features include powder coated metal components with dual flag holders. Powered by 3 alkaline C-cell batteries.

POLE BUG KIT

LED Strobe
with Dual Flag Holder (shown):

P/N 9701-54190 7015-R

Red LED

P/N 9701-86299 7015-A

Amber LED



DUAL POLE BUG KIT



Dual LED Strobes
with Dual Flag Holder:

P/N 9701-86300 7026-R

Red LED

P/N 9701-86301 7026-A

Amber LED

POLE TACKER KIT

Includes LED & T-Screw & Batteries:

P/N 9701-86317 7032-R Red LED

P/N 9701-86318 7032-A Amber LED





AIRCRAFT DYNAMICS

Home of the Robotools™ Robopak® Robolights®

360° LED strobes utilize 24 long lasting LEDs to create a highly visible 60 flashes per minute strobe. System is easy to attach and deploy, using a heavy duty strap that attaches to all types of poles and sizes. Strobe is protected by a rugged cage and includes powder coated metal components. Powered by 2 D cell alkaline batteries.

**R
O
B
O**

MID POLE 360

Mid Pole Strobes - Without Flags:

P/N 9703-57286 7175-R

Red LED

P/N 9702-43402 7175-A

Amber LED



STANDARD 360 KIT



**L
I
G
H
T
S**

Includes Flags & Batteries:

P/N 9702-43401 7167-R Red LED

P/N 9702-43264 7167-A Amber LED





AIRCRAFT DYNAMICS

Home of the Robotools™ Robopak® Robolights®

BOLT - THRU 360



P/N 9706-37385 7177-R Red LED
P/N 9706-37386 7177-A Amber LED

BOLT - THRU W/ FLAGS 360



P/N 9706-37383 7219-R Red LED
P/N 9706-37384 7219-A Amber LED





AIRCRAFT DYNAMICS

Home of the Robotools™ Robopak® Robolights®

ROBOTool BLACK WIDOW BITS

Robotool Black Widow bits are rugged heat treated and with proprietary flute design, self-feeding screw and cutting spur, will cut through the hardest poles with ease and will decrease average drilling times by 50%.



ROBOTOOLS

WOOD BITS 7/16" SHANK

ALTEC PART NO.	CATALOG NUMBER	BIT DIAMETER	LENGTH
9701-86730	2525	9/16"	18"
9701-88912	2523	11/16"	18"
9701-86731	2524	13/16"	18"
9701-96931	2526	15/16"	18"
9706-37367	2516	1"	18"
9706-37368	2542	1-1/16"	18"
9706-37369	2533	1-1/8"	18"
9701-98710	2527	11/16"	24"
9701-98711	2528	13/16"	24"
9706-37370	2543	7/8"	24"
9701-98790	2529	15/16"	24"
9706-37371	2532	1"	24"
9701-98791	2531	1-1/16"	24"
9706-37372	2534	1-1/8"	24"
9706-37373	2536	1-1/4"	24"
9706-37374	2537	1-3/8"	24"



AIRCRAFT DYNAMICS

Home of the Robotools™ Robopak® Robolights®

PENTA "T" WRENCH

Penta Socket with black oxide finish and proprietary impact steel is securely attached to powder coated "T" handle for extra leverage. Easily remove and tighten Penta Bolts.

- Overall Length: 7.25"
- Penta Opening: 13/16"
- Inside Length: 1/2"
- Weight: 14 oz.

P/N 9701-98226 2779



BLUE BULLY 7/16" TO 1/2" SQUARE ADAPTER

- 7/16" Hex Adapter for 1/2" Sq. Drive Sockets
- Advanced Toughness and Wear Resistance
- Reduced Deformation
- Maximum Mechanical Properties
- Advanced Impact Resistant Technology
- Aerospace Quality/Engineered Shock Steel
- Increased Torque Yield Points

P/N 9701-98707 2801

Tired Of Breaking Adapters?

7/16" TRI-BALL QUICK CHANGE CHUCK

Super Heavy Duty 7/16" (1/2" Sq. Dr.) Quick-Change Chuck. The most secure and durable quick-change chuck available! Utilizing a proprietary three ball bearing system, this chuck will secure your bits, adapters and sockets under extreme circumstances. Designed to be used with high torque 1/2" square drive impact wrenches.

P/N 9701-98708 2403



1/2" SQUARE DRIVE PENTA SOCKET

- Inside Length: 1/2"
- Opening: 13/16"
- Overall Length: 2"

P/N 9701-57240 2775



ARE YOUR SOCKETS IMPACT QUALITY SAFE?

*Black Oxide Finish - Heavy-Duty Impact Quality Steel
Best Sockets Available!*



VOLTAGE PHASING METERS

- 2 Models to choose from - Digital and Analog
- Instrument for measuring overhead and underground voltages
- Two modes of operation AC and Hi-Pot
- 0-40KV meter up to 240KV with resistors
- Automatically adjust voltage display to match resistors if used
- Hi-Pot mode for testing URD Cable
- In Hi-Pot mode bar graph marks the peak voltage while cable is being charged
- Large easy to read digital meter and analog bar graph
- Digital meter reads to nearest 100 volts
- Meter has lighted background that can be turned on for use in poor light conditions
- Meter enclosure made of high quality rugged extruded aluminum
- Auto shutdown after 40 minutes if no voltage is detected
- Long battery life from three AA's
- Auto self test and battery check during start up
- The coiled, self retracting cable is 16" retracted and 10' when fully extended
- Units: Include volt meter, conductor hooks, carry case, batteries, and instructions.



DIGITAL METER



900706702 6702

ANALOG METER



970799170 6702-A

TOP DISPLAY OF VOLT METERS



900767021 6702-1



970175507 6702-2



970131308 6702-3

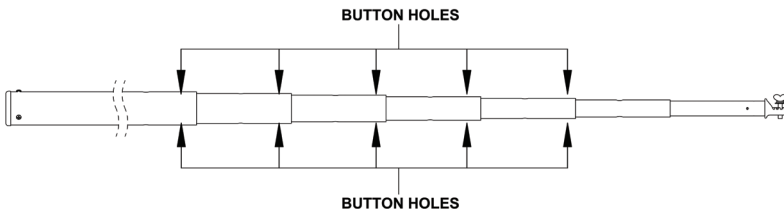


970136022 6703

ALTEC	HASTINGS	DESCRIPTION	Lbs.
900706702	6702	Digital Volt Meter 0-40kV	5.0
970799170	6702-A	Analog Volt Meter 0-40kV	5.0
970136022	6703	Pair Of Extension Resistors For Use With Model 6702	1.3
900767021	6702-1	One 15/25KV Loadbreak Bushing Adapter	0.6
970131308	6702-3	One 35kV Loadbreak Bushing Adapter	0.5
970175507	6702-2	One D.C. Hi-Pot Adapter For Use Up To 35kV	0.5
970550092	A30395	Replacement Carrying Case	2.1
970080515	6711	Kit: 6702 w/Case, (2) 6' Universal Fiberglass Poles w/Carrying Case	10.0
970799716	6711-A	Kit: 6702-A w/Case, (2) 6' Universal Fiberglass Poles w/Carrying Case	10.0

QUICK-CLICK TEL-O-POLE HOT STICKS NEW FROM HASTINGS!!

- The original Tel-O-Pole® Hot Stick design
- Holes 180 degrees apart on each section, help to locate a button hole faster and easier
- Allows user to keep their eyes on the top of the stick and not the next button hole, making the operation safer and quicker
- Models available include Standard, Heavy Duty, and Standard with Tip Lock



ALTEC	HASTINGS	DESCRIPTION
STANDARD MODELS		
970799773	S-235-2	35' Tel-O-Pole Hot Stick with Double Button Hole
970799774	S-240-2	40' Tel-O-Pole Hot Stick with Double Button Hole
970799776	S-245-2	45' Tel-O-Pole Hot Stick with Double Button Hole
HEAVY DUTY MODELS		
970799777	SH-230-2	30' Tel-O-Pole Hot Stick with Double Button Hole
970799778	SH-235-2	35' Tel-O-Pole Hot Stick with Double Button Hole
970799779	SH-240-2	40' Tel-O-Pole Hot Stick with Double Button Hole
STANDARD MODELS WITH TIP-LOCK FEATURES		
970799780	ST-235-2	35' Tel-O-Pole Hot Stick with Double Button Hole
970799781	ST-240-2	40' Tel-O-Pole Hot Stick with Double Button Hole
970799782	ST-245-2	45' Tel-O-Pole Hot Stick with Double Button Hole





GOLIGHT

Durable... Versatile... Powerful...
... **GUARANTEED**

GXL® LED Xtreme Lighting

Building on its foundation of designing and manufacturing Durable, Versatile and Powerful lighting products with unmatched warranties and after-sale support, Golight now offers three lines of fixed mounted LED lights. All series are extremely durable and backed by a comprehensive warranty. We are confident that one of our GXL LED lights will fit your fixed lighting needs.

WORKLIGHT



PERFORMANCE



OFF-ROAD



Golight GT Remote Control Lighting

Golight was built on a powerful line of controlled spotlights shown in the GolightGT Series line. These spotlights can come in multiple variations; Halogen or LED, Permanent or Portable Mount, 4 Remote Control Options. These lights are durable, versatile, powerful and are all backed with a 3 year warranty program. Available in Black or White.

HALOGEN / PERMANENT OR PORTABLE MOUNT



Golight GT Permanent Mount

P/N 990954558 20004GT

White, Wireless Handheld

P/N 990954559 20204GT

White, Wired Dash Remote

LED / PERMANENT OR PORTABLE MOUNT



Golight GT Portable Mount

P/N 990954863 79014GT

White, Wireless Handheld

RadioRay Accessories

P/N 970336531 - LED Insert

P/N 717330018 - Security Dome

P/N 970193162 - Flood Lens Kit

P/N 900001800 - Carrying Case

P/N 717330034 - WL Dash Remote





Stryker ST Remote Control Lighting

The Stryker ST Series lights are an expansion of our core Golight line... offering a lower profile look as well as the option of a chrome finish. The Stryker ST line comes in Halogen or LED and are backed with a 5 year warranty program.

STRYKER ST HALOGEN



Stryker ST Permanent Mount

P/N 970783886 3000ST - White, Wireless Handheld

P/N 970778185 30004ST - White, Wireless Handheld LED

Stryker ST Portable Mount

P/N 970784719 30002ST - White, Wireless Handheld

P/N 970783875 30005ST - White, Wireless Handheld LED

STRYKER ST LED



Stryker Accessories

P/N 970783876 30300 - ST Wireless Handheld Remote





CLASS 6 SPIRAL CONDUCTOR COVER

- Provides protection for accidental brush contact during live line maintenance up to 72.5kV
- Tested per ASTM F712
- Made from tough, durable ABS Plastic
- Includes grip-all adapter for hotstick installation
- Overall length of approximately 53in. (1.3m)

P/N 970774717 PSC4060737GA

MEET THE LATEST ADDITIONS TO CHANCE LINEMEN GRADE TOOLS™

CHANCE® Rubber Insulating Blankets

- Protect workers from accidental contact with energized components during line maintenance
- Meet ASTM Standard Specification D1048
- Type II (ozone-resistant)
- Made of ozone/corona-resistant elastomer
- Special formulation exhibits superior resistance to long-term aging/checking
- Will retain its high-visibility orange color
- 100% electrically tested and date stamped
- Class 4 blankets maximum use voltage 36kV and proof tested at 40kV AC
- Class 2 blankets maximum use voltage 17kV and proof tested at 20kV AC
- 100% electrically tested and date stamped

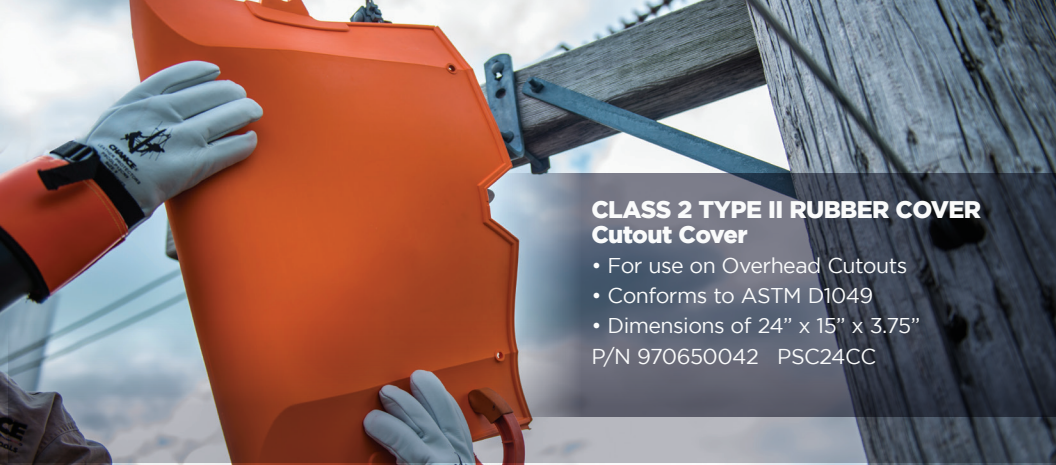
Solid Blankets

Altec	Hubbell	Description
970653838	PSC13	Class 4 22" x 22", 28 eyelets
900000346	C4060346	Class 4 36" x 36", 6 eyelets

Slotted Blankets

970040588	C4060348	Class 4 36" x 36", 28 eyelets
970786571	PSC4060724	Class 4 22"x22", 28 eyelets
970703755	PSC4060708	Class 2 22" x 22", 12 eyelets





CLASS 2 TYPE II RUBBER COVER Cutout Cover

- For use on Overhead Cutouts
 - Conforms to ASTM D1049
 - Dimensions of 24" x 15" x 3.75"
- P/N 970650042 PSC24CC

Universal Epoxiglas® Extension Arms



- Fits composite or wood crossarms up to 3-3/4" x 4-3/4"
- Cushioned clamp and hanger loop to protect composite arms
- Grippers on clamp can be removed for wood crossarms
- Design allows removal of components for reconditioning pole
- Designed for use with rubber gloves or hot sticks
- Max. Vertical Loading per Wireholder: 150 lbs.

Altec	Hubbell	Epoxiglas® Arm Dia & Length	Number of Wireholders	Fits Maximum Crossarm Size	Max. Vertical Loading per Wireholders
970393307	PSC4004101	2 1/2" x 6'	2	3 3/4" x 4 3/4"	150 lbs.
970393314	PSC4004102	2 1/2" x 5'	1	3 3/4" x 4 3/4"	150 lbs.

Wireless Phasing Set

Phasing Mode Range: 480V up to 765kV

ARVI Mode Range: Cap. Test Point up to 765kV

Features & Applications

- Dual mode unit - Wireless Phasing Set (WPS) and full range Auto-Ranging Voltage Indicator (ARVI)
- WPS mode for determining phase relationship between two conductors with same nominal voltage
- ARVI mode to determine approximate voltage class of energized conductor
- Bright LEDs and audible alarm indicate in-phase or out-of-phase (WPS mode) and voltage class (ARVI mode)
- For use on 50/60Hz overhead and underground systems with proper adapters
- For use with hot sticks only

P/N 970733313 PSC4032916



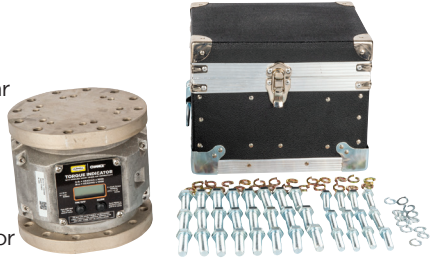


Digital Torque Indicator

Digital Wireless Torque Indicator with Bluetooth

- Measuring torque provides positive indication of anchor holding capacity in any soil type
- The Torque Indicator mounts between the Kelly bar adapter and drive tool (or locking dog assembly)
- Bluetooth technology
- Torque displays on base unit and transmits to Bluetooth device
- Bluetooth device not supplied with Torque Indicator

P/N 970799734 C3031836



Duckbill/C-Clamp Grounding Clamps

Rely on Altec to keep you grounded.

Contact us for all grounding and meter needs!

P/N 081100158 C6000197 Duckbill Clamp

P/N 900703412 PSC6003412 C-Type Clamp

Truck Accessories

Combination Swivel Wireholder/Sheave for Altec® trucks

- Eliminates changeovers from Wireholder (for picking up a phase conductor) to Rope Sheave (for lifting items)
- Each combination unit attaches directly to jib
- Rated Working Load:
Wireholder - 300 lbs.
Sheave - 800 lbs.
- Both units feature a Large Swivel Type Roller Wireholder with 2-1/2" x 3-38" opening and a 7"-dia. Sheave to accept up to 3/4"-dia. rope

4" x 4" Square Jib:

P/N 900002530 T4002530

Weight - 23 lbs.

3" Diameter Jib:

P/N 900002529 T4002529

Weight - 23 lbs.



P/N 900002530



P/N 900002529



TOOLS TO GET THE JOB DONE RIGHT.





Track | Trace | Transmit
T3 Technology with Onboard GPS

12 Ton Crimping with T3 Technology

All of the exceptional features of its PATRIOT predecessor, plus a new ergonomic design and state of the art technology.

- TRACK crimp locations with onboard GPS - BURNDY Exclusive!
- TRACE individual crimps with comments, photos, and output force validation.
- TRANSMIT via Bluetooth® technology and sync data to the cloud.
- C-head with 1.65" jaw opening, 355° head rotation, 12T U dies
- Patented T-Track alignment guide for HYGROUND®
- Bright LED Worklight and Red/Green LED to validate output force

P/N 970799201 Tool, Covered C-Head, 3Ah, Pro Bag

P/N 970799203 Tool, 3Ah, Pro Bag

P/N 970799205 Tool, 5Ah, Pro Bag



DESIGNED for SAFETY
and ERGONOMICS

In-Line Crimping and Cutting Tool

Trigger Lock, Locking Jaw Tabs, LED Worklight, and Perfectly Balanced (COG=0).

- Interchangeable scissor action Jaws:
- **Crimping:** BG/D3, O/D3, D3, XPJ & Dieless
- **Cutting:** ACSR, CU/AL & GUY (3/8" EHS Max.)

Tool with Jaw, 5Ah Battery, Utility Bag:

P/N 970794310 XPJ Jaw Model

P/N 970794347 BG/D3, ACSR, & EHS GUY Jaws

P/N 970794348 O/D3, ACSR, & EHS GUY Jaws



NEW - CUSTOMIZE A TOOL KIT!

Choose up to 3 jaws
and optional accessories.

Tool Shown
with XPJ
Jaw



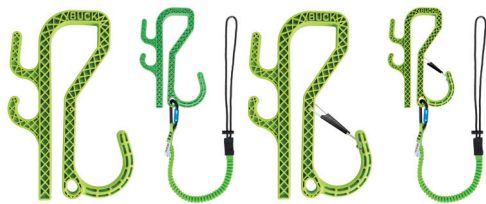
EHS GUY



TO CUSTOMIZE A TOOL KIT - Contact your Altec Supply Account Manager or call
1-877-GO ALTEC (1-866-462-5832) for more information.



BUCKINGHAM MANUFACTURING



Bucket Hook With Tether Hole

- Can fit up to a 2 1/2" bucket lip.
- 3:1 Safety factors on both the outside hook (40 lb. WLL) and inside accessory hooks (15 lb. WLL).
- Tool tether connection eye has an 8 lb. WLL.
- Tool tether measures 51" in length.
- Stainless-steel wire gate w/rubber grip located on the outside hook adds additional security to anything attached to the hook.

Hook w/Tether Hole - P/N 970794695 2410

PHook w/Tether Hole/Tool Tether - P/N 9708000142 2410T

Hook w/Tether Hole & Gate - P/N 970799196 2410G

Hook w/Tether Hole/Gate/Tool Tether - P/N 970800143 2410GT

EZ Squeeze™ w/LeverGrab™ & Black Tough Rope™

P/N 970800144 490K5

- Buckingham's EZ Squeeze™ featuring a Levergrab™ and our newest Tough Rope™, which is now available in black!
- The patented Levergrab™ was specifically designed to let the user adjust without removing weight from their inner rope.
- Loop handle on the outer strap provides a more ergonomic position for the user's hands while ascending or descending.
- Features steel carabiners as body belt connectors.



BuckOhm™ TrueFit™ Harness w/Dielectric D-Ring -

P/N 970774454 U68L7NQG

- Dielectric quick connect chest buckle & leg strap buckles for easier donning.
- Dielectric D-Ring for attachment purposes.
- Lightweight back pad evenly distributes weight for extra comfort.
- Dual trauma straps aid in orthostatic shock prevention.
- Frontal rescue loops.
- Unique adjustment features both on the front and back of the harness make this a perfect choice if you are looking for a universal harness.

Economy TrueFit™ w/BuckStep™ 2.0

P/N 970798323 U637F8Q6

- Hook & loop chest strap.
- Steel quick connect leg strap buckles for easier donning.
- Steel dorsal D-ring for attachment purposes.
- Lightweight back pad to evenly distributes weight for extra comfort.
- Frontal rescue loops.
- Dual trauma straps to aid in orthostatic shock prevention.
- Steel friction buckles for harness adjustments.



BuckOhm™ TrueFit™ X-Style Harness

P/N 970800146 U602P8Q1

- Dielectric quick connect chest buckle and leg strap buckles for easier donning.
- Dielectric dorsal D-ring for attachment purposes.
- Sternal web loop.
- Lightweight back and leg pads to evenly distribute weight for extra comfort.
- Unique adjustment features both on the front and back of the harness make this a perfect choice if you are looking for a universal harness.



BuckTech™ FR

P/N 970748165 68K966K6

- Steel quick connect chest & leg strap buckles.
- Low profile sternal D-ring for use with mobile fall arrestors & rope grabs.
- Removable seat & bridge for extra mobility.
- Dorsal D-ring for attachment purposes.
- Aluminum hip & seat D-rings reduce overall weight.
- Lightweight shoulder pad to evenly distribute weight.
- Wide back pad for extra lumbar support.
- Dual breakaway loops at waist level provide storage for lanyard hooks when not in use.
- 100 lb. rated gear loops.



Body Belts™

Perfect for those who work in areas of the country where there are large temperature swings – when one part of day or season you could be wearing only FR pants and shirt, then next you could be wearing heavy duty Carhart's. Having an adjustable belt allows the user to adjust for comfort and practicality.

- The Black 20192CM and Heritage 20192CM-BH models feature adjustable man-rated upper belt straps and lower work positioning D-pieces that allows the user to customize the size of the body belt at any given moment.
- The 4 D-rings support and make the use of wood pole fall restriction devices extremely simple.
- Fully padded 7" short back pad makes long days more comfortable.
- High-quality, ultra-soft leather makes for that instant "broken-in" feel.



	Black 20192CM	Heritage 20192CM-BH
Small	970746269	970779337
Medium	970744512	970779405
Large	970748178	970798229
X-Large	970748179	970800147

BuckAlloy™ Black Climber Kit

P/N 970732659 A94K1V-BL

BuckAlloy™ Black Climbers

- Rated to 350 lbs. and exceeds ASTM F887 standards.
- 'T' shaped aluminum ribbed construction adds strength to the climber while the Alloy blend contributes to superior product life cycle.
- Dowel & Screw design allows for easy gaff change out.

Black Cushion Wrap Pads w/black Buck logo and BuckViz™ green stitching.

- Soft padding provides a comfortable feel for all-day use. The angled insert provides unmatched stability and prevents the shank from chafing your leg.

Black Hook & Loop Climber Straps w/BuckViz™ green stitching.

- Easy-on, easy-off hook & loop fastener straps make putting on and taking off your climbers a breeze.
- Manufactured from soft, pliable 1 ¾" nylon, which is an increase in surface area for added comfort to the top and back of your foot.

BuckViz™ green magnetic gaff guards.

- Magnet keeps the guard securely attached to your gaff.



COMPASS

PERSONAL VOLTAGE AND CURRENT DETECTOR

FROM SAFEGUARD EQUIPMENT



Always On, Always Aware, Always Safe

Compass from Safeguard Equipment is the must-have electrical safety tool for high risk job sites. When Compass detects electricity near the user, audible and visual alerts display the distance and direction of the source. Compass is the only wearable that detects voltage and current, and it fits onto any hard hat for 360° of electrical safety.

Features & Specifications

- Innovative hard hat mounted design
 - Alerts are instantly noticeable without impeding vision.
- Battery life more than one week per charge
 - 3.7V 250mAh Li-Po
- Built to withstand environmental extremes
 - Functional from -4°F to 140°F
 - IP67 water resistance
- Seven levels of detection sensitivity
 - Smart Adaptive mode tailors alerts to user's surroundings
- Broad voltage detection range
 - 2400VAC-500kVAC

COMPASS

LED ALERTS

RED = VOLTAGE



BLUE = CURRENT



P/N 970800460 CE60

<p>Source to Left</p>	<h3>Directional Alerts</h3> <p>LEDs will sweep in the direction of the source, adapting as you move.</p>	<p>Source to Right</p>
------------------------------	--	-------------------------------

Makita

CORDLESS BENEFITS

3
YEAR
WARRANTY
LITHIUM-ION
TOOL &
BATTERY



TIME SAVINGS

18V LXT® Lithium-Ion Batteries have fast charge times, so users can keep moving.



ERGONOMICS

Products weigh less and are well-balanced to reduce operator fatigue.



COST EFFICIENT

Reduce maintenance costs and cost of ownership with Makita® LXT® Cordless Vacuums.



LOWER NOISE

The exclusive BL Brushless Motor delivers lower sound, minimizing disruption.

18V LXT® BRUSHLESS TOP HANDLE CHAIN SAW KITS

- High Power efficiency equivalent to a 30cc gas chain saw
- Low noise level and zero emission

970776393 / XCU08PT 14"

970776392 / XCU09PT 16"

Uses **2**
18v LXT®
Batteries

45 Minute
Charge Time

18V LXT® BRUSHLESS REAR HANDLE CHAIN SAW KITS

- High Power efficiency equivalent to a 30cc gas chain saw
- Low noise level and zero emission

970758908 / XCU07PT 14"

Uses **2**
18v LXT®
Batteries

18V LXT® BRUSHLESS 10" TOP HANDLE CHAIN SAW, TOOL ONLY

- High Power efficiency equivalent to a 22cc gas chain saw
- Low noise level and zero emission

970786158 / XCU06Z

18V X2 (36V) LXT® BRUSHLESS COUPLE SHAFT POWER HEAD WITH 10" POLE SAW COUPLE SHAFT ATTACHMENT, TOOLS ONLY

- 3-speed options (up to 9,700 RPM)
- Lever style lock system or quick tool-less installation
- Compatible with a variety of couple shaft attachments
- Electronic Torque Control stops motor if rotation speed suddenly slows or wheel is forced to stop

970778964 / XUX01Z with 970778965 / EY401MP

87



877.GO ALTEC | CONNECT.ALTEC.COM/STORE

Altec
Supply



18V LXT® BRUSHLESS 7/16" HEX IMPACT WRENCH, TOOL ONLY

- 590 ft. lbs. Max Torque
- 0-900 / 0-1,000 / 0-1,800 RPM
- 0-1,800 / 0-2,000 / 0-2,200 IPM
- Built-In L.E.D. with Preglow & Afterglow Illumination

970749925 / XWT09XVZ (Tool Only)



18V LXT® BRUSHLESS 4-SPEED 1/2" SQ. DRIVE IMPACT WRENCH, TOOL ONLY

- 240 ft. lbs. of Fastening Torque
- 430 ft. lbs. of Nut-Busting Torque
- 3 forward and 3 reverse Auto-Stop modes for increased efficiency
- 4 Speed power selection switch

970800422 / XWT15XVZ (Tool Only)

18V LXT® (36V) BRUSHLESS 1-9/16" ADVANCED AVT® ROTARY HAMMER KIT, ACCEPTS SDS-MAX BITS, AWS™



- 250-500 RPM
- 1,450-2,900 BPM
- 8.4 ft. lbs. of impact energy to handle the most demanding applications
- Large Three Finger Power Trigger for increased comfort during extended use
- Accessory: 751108-A
- INCLUDES: (2) 18V LXT® Lithium-Ion 5.0Ah Batteries, Dual Port Charger, Auto-Start Wireless Transmitter, Side Handle Assembly, Depth Rod, Bit Grease, Tool Case

970786175 / XRH07PTU

18V X2 (36V) LXT® BRUSHLESS POWER ASSISTED FLAT DOLLY

- Reversible for versatility and convenience
- Delivers up to 60 minutes of run time using one 18V LXT® 6.0Ah battery (battery not included)
- Side rails on flat bed install in up or down position
- Maximum load capacity up to 275 lbs.
- Rear wheel spacing is adjustable from 19" to 30" to accommodate the work environment

970778963 / XUC01PTX2





18V LXT® FLASHLIGHT/ SPOTLIGHT

- 4-mode operation: delivering 600 lumens on Spot, 1,000 lumens on Flood, 1,250 lumens on Spot/Flood and Strobe mode
- Illuminates up to 700 yards in Spot and Spot/Flood mode
- Up to 7 hours of continuous illumination in Spot mode with a 5.0Ah 18V LXT® battery
- 90° pivoting head for user convenience

970794102 / DML812



18V X2 LXT® CORDLESS/CORDED WORK LIGHT

- 4-mode operation: delivers 10,000 lumens on high, 4,000 lumens on medium and 2,000 lumens on low
- Up to 1.7 hours of continuous illumination with two 6.0Ah 18V LXT® batteries on high
- Dust and water-resistant construction (IP65 rated) for improved operation

970794095 / DML809



18V LXT® CORDLESS/CORDED WORK LIGHT

- 4-mode operation: delivers 3,000 lumens on high, 1,500 lumens on medium and 750 lumens on low
- Up to 3 hours of continuous illumination with two 6.0Ah 18V LXT® batteries on high
- Dust and water-resistant construction (IP65 rated) for improved operation

970794096 / DML811



18V X2 LXT® UPRIGHT L.E.D. AREA LIGHT

- Self-righting design keeps work light in upright position
- 3-mode operation: delivers 5,500 lumens on High, 3,000 lumens on medium and 1,500 lumens on Low
- 3 illumination range modes: 360°, left 180° and right 180°
- Up to 3.3 hours of continuous illumination with two 5.0Ah 18V LXT® battery on high

970800423 / DML810

18V LXT® BRUSHLESS 4-1/2" / 5" PADDLE SWITCH CUT-OFF ANGLE GRINDER



- Delivers 8,500 RPM
- Electric brake stops within 2 seconds of less for maximum productivity
- Automatic Speed Change technology adjusts speed and torque for optimum performance
- Weighs only 14-1/4" long

970786037 / XAG11T

18V LXT® CORDLESS PORTABLE BAND SAW KIT

- 4-3/4" cutting capacity accepts 44-7/8" blade
- Variable speed 275-530 ft./min.
- Trigger switch with lock-off feature requires two actions to power on band saw
- Weighs 14.3 lbs with battery

970786151 / XBP02TX



18V LXT® BRUSHLESS CORDLESS 6-1/2" CIRCULAR SAW KIT



- Delivers 5,000 RPM for faster cutting and ripping
- Automatic Speed Change™ technology adjusts torque during operation
- Weighs only 7.3 lbs. with battery

970800424 / XSH03T

18V LXT® BRUSHLESS CORDLESS RECIPRO SAW KIT

- 2-speed brushless motor deliver 0-2,300 (Low) & 3-3,000 (High) strokes per minute
- "Tool-less" blade change system allows for faster blade installation and removal
- Refined crank mechanism design minimizes blade deflection and reduces vibration

970763180 / XRJ05T





18V LXT® BRUSHLESS CORDLESS 2-PC. COMBO KIT

- **SPEED:** 1/2" Hammer Driver-Drill (0-500 & 0-2,000 RPM) delivering 530 in.lbs. of Max Torque
- **POWER:** Variable speed impact Driver (0-3,400 RPM & 0-3,600 IPM) delivers 1,500 in.lbs. of Max Torque
- **INCLUDES:** XPH12Z, XDT13Z, (2) 18V LXT® 5.0Ah Lithium Ion batteries, Rapid Optimum Charger

970800426 / XT269T

18V LXT® BRUSHLESS CORDLESS 3-PC. COMBO KIT

- **HAMMER DRILL:** 1/2" Hammer Driver-Drill (0-500 & 0-2,000 RPM) delivering 530 in.lbs. of Max Torque
- **IMPACT DRIVER:** Variable speed impact Driver (0-3,400 RPM & 0-3,600 IPM) delivers 1,500 in.lbs. of Max Torque
- **RECIPRO SAW:** Delivers 0-2,300 (Low) & 0-3,000 (High) strokes per minute and a 1-1/14" stroke
- **INCLUDES:** XPH12Z, XDT13Z, XRJ05Z, (2) 18V LXT® 4.0Ah Lithium Ion batteries, Rapid Optimum Charger and tool bag

970716660 / XT328M



18V LXT® BRUSHLESS CORDLESS 6-PC. COMBO KIT



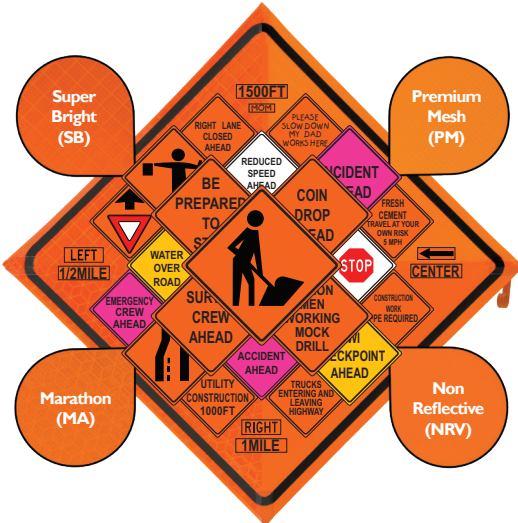
- **TECHNOLOGY:** BL™ Brushless motor is controlled to optimize battery energy use for up to 50% longer run time
- **DURABILITY:** Extreme Protection Technology (XPT™) is engineered for improved dust and water resistance
- **INNOVATION:** Rapid Optimum Charger has a built-in fan to cool the battery for faster, more efficient charging
- **RUN TIME:** 18V LXT® Lithium-Ion 5.0Ah battery BL1850B provides up to 65% more run time per charge
- **INCLUDES:** XPH07Z, XDT14Z, XRJ05Z, XSH03Z, XAG04Z, DML802, (2) 18V LXT® Lithium-Ion 5.0Ah batteries, Dual Port Rapid Optimum Charger and tool bag

970800427 / XT611PT

SafeZone Series Roll-Up Signs



All SafeZone Series signs are made of premium, state-of-the-art materials. For daytime use (ONLY) we offer Premium Mesh and Non-Reflective Vinyl with superior fade resistant UV stabilizer. For daytime as well as nighttime usage, we offer Standard Reflective and High Performance Reflective materials.



Bone Corner Pockets come standard on each sign along with a heavy-duty fiberglass ribs, anti-kiting device and hook & loop tie strap for storage. All SafeZone Series roll-up signs conform to the Manual on Uniform Traffic Control Devices (MUTCD) and are NCHRP-350 tested and certified.



Roll-Up Sign Features

- Lexan corner pockets with lifetime warranty
- Heavy duty fiberglass ribs
- Quick and easy setup and takedown
- Hook and loop storage strap for easy storage
- Anti-Kiting strap holds sign to ribs securely
- Sign legend printed for quick identification
- These signs can be used with any of our "SafeZone Series" sign stands
- Standard and custom sizes available

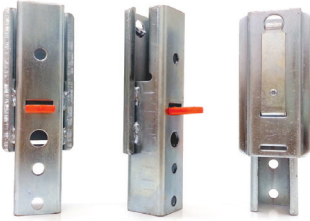


SafeZone Series Stands



All SafeZone Series Sign Stands come with our patented Auto-Latch mechanism. The advantage of the Auto-Latch is the speed in which the sign is attached and released from the stands.

- Crash Design Breakaway Base
- Exclusive Quick Release System for all modular attachments and accessories
- Compact and Lightweight
- Bright Orange, UV Stabilized, Powder Coated Legs for Safety, Durability & Visibility
- Pull Pin and Kick Release for fast setup by hand or foot
- Simple Nut & Bolt Construction allows for fast repairs using basic hand tools
- 3 Height Adjustments on Legs for Use on Uneven Terrain



Auto-Latch Features

Bone's patented corner pocket snaps quickly into the Auto-Latch. The easy release lever makes it simple to remove the sign. The Auto-Latch Bracket is standard on all of our Sign Stands except when Universal Bracket is requested.



970262875
SZ-312

970156009
SZ-412

970156008
SZ-412-S

970800715
SZ-412-FX

970800717
SZ-412-S-FX

970667599
SZ-412-X



WATERAX DBS-90G BACKPACK PUMP

- Heavy gauge galvanized metal tank shaped to mould comfortably to the back
- Large camlock cap with gasket facilitates filling and cleaning
- 5 US gallon (4.2 imp gals, 19 L) capacity
- Galvanized Steel
- 14 lbs (6.4 kg) dry weight
- 17" H x 15" W x 7"D

P/N 970786801 DBS-90G Backpack Pump
P/N 970792400 300307 Mounting Bracket

WATERAX OT-4NX POLY BACKPACK PUMP

- Lightweight, rugged UV-resistant polyethylene
- Sleekly contoured with lumbar support, comfortable straps
- Large diameter filler neck
- 5.3 US gallon (20 L) capacity
- Corrosion-resistant
- Removeable plastic strainer
- Water level indicators (US gallons and liters)
- 8.5 lbs. dry weight
- Wet weight: 52.6 lbs.

P/N 970786803 250221



WATERAX VPO-1X BACKPACK PUMP

- Resistant to UV and ozone
- Removable plastic strainer
- Made of strong polyester fabric encased in vinyl
- Collapsible which requires minimal storage space
- Rugged brass hose connector with brass cap
- 5.6 lbs (2.5 kg) dry weight;
37.6 lbs. (17 kg) wet weight
- 5 US gallons (19L)

P/N 970786804 250291

WHEN FIRST ON THE SCENE, BE PREPARED WITH **ZOLL**®



ZOLL AED 3®

- Enhanced Real CPR Help® includes industry-firsts such as a full-color display and vivid rescue images, a CPR cycle timer, and a large, color AR bar gauge that shows CPR compression depth.
- Unique, Integrated Pediatric Support treats adult and pediatric patients with a single CPR Uni-padz® electrode. Activate child mode (and use the same set of pads) for a pediatric rescue.
- Integrated WiFi Connectivity enables automatic reporting of device status, giving rescuers the confidence of knowing the AED is ready in an emergency.

P/N 970801076 8511-001102-01 Fully Automatic Zoll AED 3
P/N 970801079 8511-001101-01 Semi-Automatic Zoll AED 3



Powerheart® G5 AED

- Intellisense® CPR Feedback delivers four (4) distinct text/voice corrective CPR prompts for rate, depth and recoil.
- Dual Language coaching option can change from primary to secondary language in the push of a button.
- RescueCoach® guides users through each critical step of the rescue with user paced voice/text prompts.

P/N 970801080 G5A-80C-S Fully Automatic Powerheart® G5
P/N 970801081 G5S-80C-S Semi-Automatic Powerheart® G5



AED Plus

- Real CPR Help Includes real-time, guideline-driven feedback with visual and audio prompts that help deliver high-quality CPR compressions.
- CPR D-padz® is the industry's only single-piece, peel-and-place adult electrode pad includes a CPR landmark for the proper hand placement during CPR compressions
- Long lasting consumables have five (5) year battery and pad life resulting in fewer replacements, less maintenance and increased AED readiness.

P/N 970530060 8000-004007-01 Fully Automatic AED Plus
P/N 970640270 8000-004000-01 Semi-Automatic AED Plus



Mobilize Rescue Systems

- Mobilize Rescue Systems is the only integrated trauma system that pairs modern medical supplies and an interactive, real-time instructional app.
- Comprehensive set of medical supplies to address a wide variety of traumatic events such as severe bleeding, cardiac arrest, seizures, choking, burns and more.
- The Mobilize App features an algorithm based on medical protocols and best practices that provides step-by-step guidance on how to assess and treat victims during a medical emergency.
- Dimensions 17.2" x 13.7" x 6.5" 15 lbs.

P/N 970801083 8911-001000-01





5610 Corporate Drive
St. Joseph, MO 64507

TOOLS TO GET THE JOB DONE RIGHT.

Altec Supply has engineered some of the most effective products in the Electrical Utility, Telecommunications, and Arborist Industries exclusively for our customers. Where quality, durability, and features are important, Altec Supply has met and exceeded the standard.

Please Contact Your Altec Supply Account Manager
Or Call 1-877-Go Altec (1-800-462-5832) For Additional Information.